



**The Kioloa Coastal Campus
The Edith and Joy London Foundation**

Annual Report 2010

Contents

The Edith and Joy London Foundation anniversaries

- 1. Management and Administration**
- 2. Summary of activities 2010**
- 3. Goals 2011 and beyond**
- 4. Snapshot 2010**
 - Use of facilities
 - Occupancy data
 - Fees and charges
 - Development of facilities
 - Field station maintenance
 - Land Management
- 5. Research and research activity 2010**
- 6. The Kioloa Coastal Campus Finance 2010**
 - The Joy London Endowment (The Joy London Fund)
 - Budget performance

Appendices:

Appendix A - Kioloa Coastal Campus - Livestock Reconciliation 2010

Appendix B - Details of activities at Kioloa Coastal Campus 2010

Appendix C - The Joy London Endowment fund – reconciliation
KCC management only

Appendix D - Financial statement 2010, Kioloa Coastal Campus budget unit
KCC management only

Appendix E - 2010 Development Bank Loan financial statement
KCC management only

2010 Anniversaries

The Edith and Joy London Foundation The Kioloa Coastal Campus

The original Homestead 100 years old

The centenary of The Homestead, the original dwelling on the London's property at Kioloa, is celebrated during 2010 -2012. An award-winning heritage renovation of The Homestead was undertaken during 2004.

The Homestead was originally built for William Walker, who managed forest operations for McKenzies sawmill at Kioloa. Construction of the Homestead was started during 1910 -1912.

Following renovation, The Homestead was allocated as the private residence of the Campus Manager and his family. The Manager is obliged to live on-site.

35th Anniversary The Edith and Joy London Foundation

The Edith and Joy London Foundation, now known as the Kioloa Coastal Campus, was established in 1975 through the generosity of the then property owner, Miss Joy London in memory of her mother Mrs Edith London.

On 1 March 1975 the property was formally handed over to the Australian National University by Miss London through a Deed of Gift.

In accepting the gift and naming the property in honour of Miss London and her mother, the University agreed to

"... preserve the land in its entirety in its natural and present state as far as is possible consistent with the purposes for which it was given."

1. The Kioloa Coastal Campus Management and Administration

The Edith and Joy London Foundation (Kioloa Coastal Campus (KCC)) continued to be managed by an Executive Officer, the Campus Manager, and the Kioloa Advisory Board, in line with specific guidelines set out in The Edith and Joy London Foundation *Deed of Gift*.

Membership of the Kioloa Advisory Board 2010

A/Prof Tim Senden	Chair, Applied Mathematics, RSPSE
Mr Warwick Williams	Delegate, Director F&S (to July 09)
Mr Mick Serena	Delegate, Director F&S (from October 09)
Prof Hans Bachor	Physics, Faculty of Science
Dr Judith Caton	Applied Mathematics, RSPSE
Dr Alistair Greig	School of Social Sciences, Faculty of Arts
Dr Harvey Marchant	Earth & Marine Science, Faculty of Science
Prof Des Nicholls	College Business & Economics, SMMB
Mr Bill Powell	Local community representative
Ms Melissa Gryglewski	Undergraduate student representative (from November 09)
Mr Antonie Botes	Post-graduate student representative (from July 10)

The Kioloa Advisory Board met formally on 3 occasions during 2010.

The Kioloa Coastal Campus - The Edith and Joy London Foundation

Management and administration 2010

No staff changes were made during 2010.

The ANU

Mr Bart Meehan (Facilities & Services)	Executive Officer
--	-------------------

The Kioloa Coastal Campus (field station)

Mr Steven Teding van Berkhout	Campus Manager
Mr Richard Eldridge	Campus Caretaker
Mrs Robin Teding van Berkhout	Campus Administrator (half-time)
Ms Francesca Baas Becking	Campus Administrator (half-time)
Ms Gail Burnside	Campus Housekeeper (half-time)

2. Summary of activities 2010

- Construction of the Multi-purpose Building, successfully re-financed in September 2009 by a \$2.5M grant through the DEEWR Teaching and Learning Fund, was put back out to tender. The new construction contract was awarded to Southpoint Building Services.
- The KAB welcomed Antonie Botes as the new post-graduate student representative to the KAB.
- Construction of a new whole-of-campus On Site Waste Management System (OSWM), an A&A worm farm, started. .
- The revised Kioloa Coastal Campus website was re-launched during 2010. Updates and news have regularly been posted on the KCC website since then.
- The ANU Finance and Business Services audit and review of Kioloa Coastal Campus finance procedures and accountability found that the Campus was fully compliant with ANU requirements of accountability and transparency.
- To enhance payment options for KCC clients, an EFTPOS facility was installed in the KCC office.
- Internet coverage at the fieldstation was improved during 2010 with a DOI/Netcomms upgrade of hard wired and wireless infrastructure. An agreement was reached with ScoastNet, a local internet service provider, to provide local on-site backup.
- ANU Green funding from 2009 was allocated to the installation of seven heat-pumps to replace old electric hot water services in parts of the Kioloa Coastal Campus.
- Environmental management - catchment areas fencing was completed around Wallensky's Dam and Butler's Creek with the help of ANU Green funding from 2009.
- Community Outreach –a formal agreement to locate and operate the Murramarang Community Garden (a separate incorporated body) on the fieldstation was negotiated with the ANU. Campus staff helped in clearing and fencing the garden site. Progress with the community garden is regularly reported on the KCC website.
- An OH&S upgrade of work sheds and working equipment started during 2010 with the purchase of new secure storage cabinets, signage, and safety equipment. The OH&S upgrade will be completed during 2011.
- A Canadian wood preservation company, Viance, reached an agreement with the Kioloa Coastal Campus to establish several small testing sites in termite infested areas of the fieldstation. Viance pay a yearly rental fee for the site.
- Organisation began on an upgrade of First Aid equipment and signage across the fieldstation.
- In response to community concerns support was withdrawn for the proposed Crown Castle telecommunications tower on the fieldstation property.
- Kioloa Coastal Campus ended the 2010 year with an operating surplus of approximately \$39,000 ([Kioloa Coastal Campus Finance 2009](#))
- Research and teaching related activity at the Kioloa Coastal Campus continued to increase as a proportion of all group activity, representing 94% of activities in 2010 compared to 89% of total use in 2009 and 60% in 2008.
- Writing retreats and workshops continued to increase at the fieldstation, representing 22% of user groups in 2010 in comparison to 18% of user groups in 2009.
- ANU user groups continue to represent 64% of user groups at the fieldstation, the highest proportion of all user groups (a decrease from 80% of user groups in 2009).
- The Kioloa Coastal Campus re-established its membership of the international network of fieldstations, the Organisation of Biological Fieldstations (OBFS).
- For the first time the Kioloa Coastal Campus closed for business during the Christmas/New Year period in 2009/2010, in line with the usual ANU festive season closure.

3. Goals 2011 and beyond

Short-term Goals 2011

Building upgrades and construction

Multi-Purpose Building

- Organise and oversee construction of Multi-Purpose Building in consultation with Facilities and Services (ANU), Dual Design (local architect Katrina Scobie), Ecopolis (designing architect, Adelaide, Paul Downton), and Southpoint Building Services (construction company)
- Organise and oversee internal fit-out of Multi-Purpose Building
- Organise and plan sod-turning and opening events for the Multi-Purpose Building
- Organise process of naming the Multi-Purpose Building
- Complete construction and connection of the whole of campus on-site-waste-management system (OSWM) and construction of effluent disposal area.
- Plan and complete electrical upgrade to ensure power supply to the Multi-Purpose Building.

Laboratory

- Continue and complete re-furbishment of Laboratory Building

The Dairy – a writer's retreat

- Explore funding options for renovation and refurbishment of The Dairy building
- Prepare plans and costings for re-furbishment of The Dairy

The Homestead

- Continue program of external maintenance of The Homestead
- Continue program of landscaping and fencing of The Homestead grounds

Kioloa Coastal Campus policy and administration

Reconciliation Action Plan:

- Continue liaison and involvement in KCC and ANU RAP initiatives and activities
- Continue liaise with local Aboriginal community organisations regarding cultural awareness

Community Outreach:

- Continue to support and assist Murramarang Community Garden
- Re-develop and plan new KCC Open Week dates and activities

Kioloa Coastal Campus website

- Continue to maintain, improve and update KCC Website and KCC visibility on ANU web pages

Kioloa Coastal Campus Land Management

Environmental management

- Establish and maintain re-cycle stations on cottage
- Continue feral animal and pest control program (pindone rabbit baiting and 1080 fox control).
- Continue with revision of Bushfire Management Plan
- Establish Land Management Plan.

Shorebird Recovery Program

- Continue participation in and support of protection of local endangered species.

Kioloa Advisory Board

- Assist the Chair of the Kioloa Advisory Board in developing and submitting plans for new governance structure for the Kioloa Advisory Board
- Establish Kioloa Advisory Board Sub-Committees on Marketing & Fundraising and Finance

Kioloa Coastal Campus maintenance and infra-structure management

- Complete OH&S upgrade of work sheds and working equipment
- Complete upgrade of First Aid equipment and signage across the fieldstation
- Finalise electrical upgrade of fieldstation in consultation with F&S electrical engineer.

- Continue update of KCC maintenance priorities and conduct maintenance tasks as per budget.
- Continue with audit and review of KCC inventories, replacement purchasing as required
- Continue landscaping of accommodation areas of property as per landscape plan.

Joy London Fund

- Kuloa Advisory Board and KCC staff, in tandem with ANU Office of Endowment for Excellence, work to grow Joy London Fund and develop scholarship program.

Long-term Goals

Building upgrades and construction

Multi-Purpose Building

- Complete construction and internal fit-out of Multi-Purpose Building
- Organise and plan sod-turning and opening events, including new name, for the Multi-Purpose Building for end 2011 or early 2012.

On-Site Waste Management System.

- Establish efficacy of whole of campus on-site-waste-management system (OSWM), including establishment of effluent disposal area.

Laboratory

- Complete the re-furbishment of the Laboratory Building

Main Community Building

- Develop plans, explore funding for re-furbishment and extension of kitchen and meal facilities in the Main Community Building, in line with increased usage through new Multi-Purpose Building.
- Negotiate to place refurbishment project on the ANU (3 year) Capital Development Plan.

The Dairy – a writer’s retreat

- Submit plans for The Dairy renovation to Facilities & Services and Shoalhaven City Council for approval. Refurbish The Dairy as a writer’s retreat.

The Homestead

- Complete program of landscaping of The Homestead grounds

Kioloa Coastal Campus policy and administration

Staffing

- Maintain optimum staffing levels to meet changing needs for fieldstation management

Usage rates

- Maintain and develop usage rates for the fieldstation to carrying capacity

Reconciliation Action Plan:

- Continue liaison and involvement in KCC and ANU RAP initiatives and activities
- Continue liaison with local Aboriginal community organisations regarding cultural awareness

Community Outreach:

- Continue to support and assist Murramarang Community Garden
- Re-launch new KCC Open Week activities

Kioloa Coastal Campus website

- Continue to maintain, improve and update KCC Website and KCC visibility on ANU web pages

Kioloa Coastal Campus Land Management

Environmental management

- Continue feral and pest control program (pindone rabbit baiting and 1080 fox control).
- Implement recommendations of Fire Management Plan and Land Management Plan.

Shorebird Recovery Program

Continue participation in and support of protection of local endangered species

Kioloa Advisory Board

- Assist in establishment of new Fellowship at the Kioloa Coastal Campus
- Develop and install Honour Roll for Kioloa Coastal Campus (website and plaque)

Kioloa Coastal Campus maintenance and infra-structure management

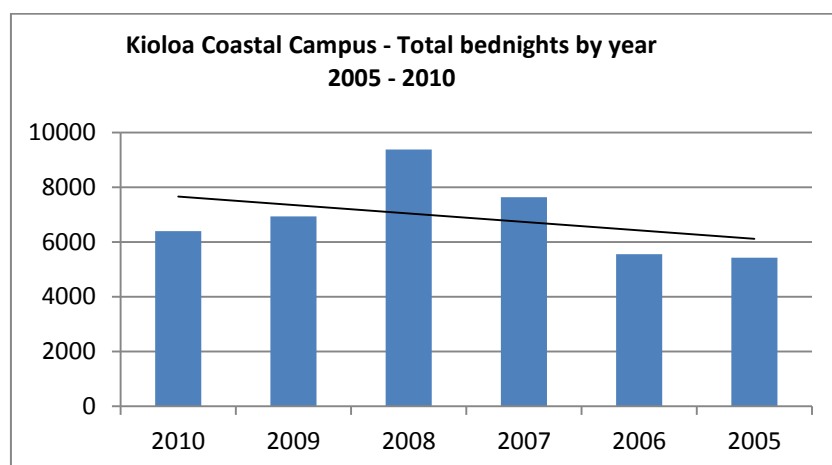
- Maintain and continue to improve OH&S arrangements in workshops
- Maintain First Aid equipment and signage across the fieldstation
- Maintain ongoing review of KCC maintenance priorities
- Maintain landscaping of accommodation areas of property as per landscape plan

4. The Kioloa Coastal Campus The Edith and Joy London Foundation Snapshot 2010

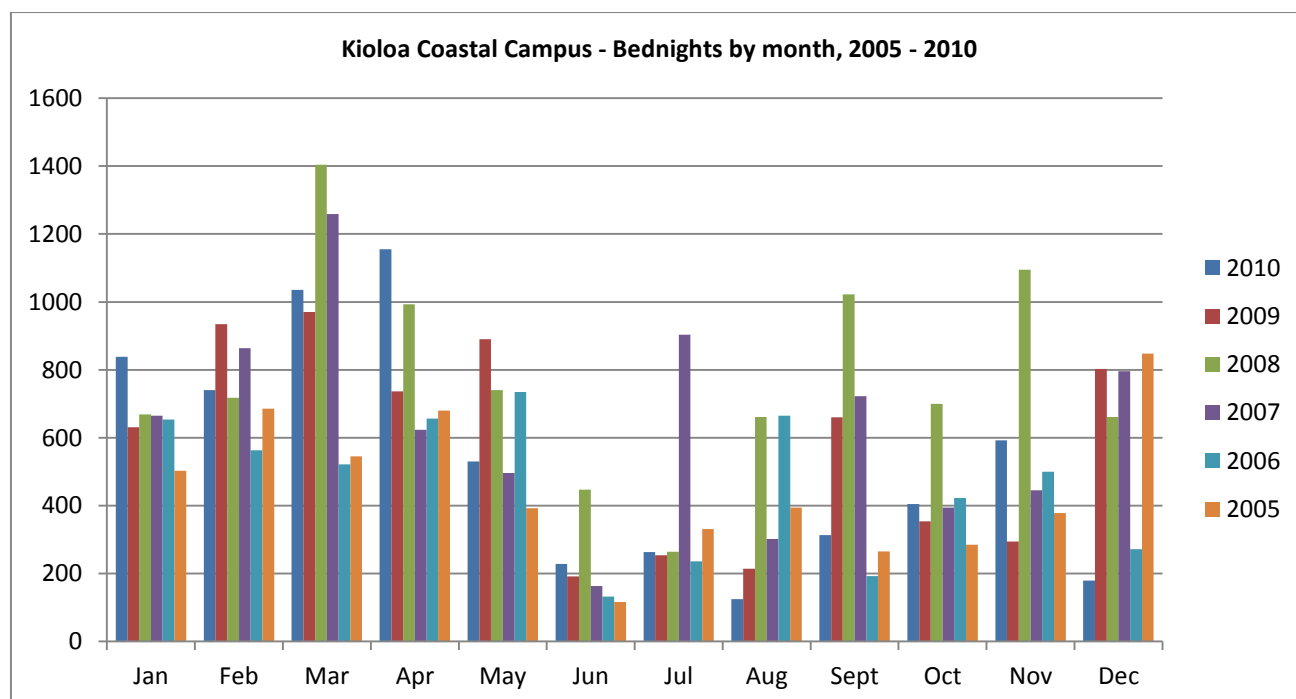
Use of Facilities

The Kioloa Coastal Campus was booked for use by approximately 144 separate groups or individuals during the 2010 year, generating almost 6,500 bed-nights. As demonstrated in [Graph 1](#) (below), Kioloa Coastal Campus annual bednights continue to show a stable trend over the 6 year period from 2005 – 2010, despite the decrease in total user nights during 2010 to the lowest level since 2006, reflecting the global financial crisis. Bookings for 2010 were reduced during the latter half of the year as well as the traditionally quiet winter months of June, July and August.

Graph 1 - Kioloa Coastal Campus – Total bednights by year, 2005 – 2010

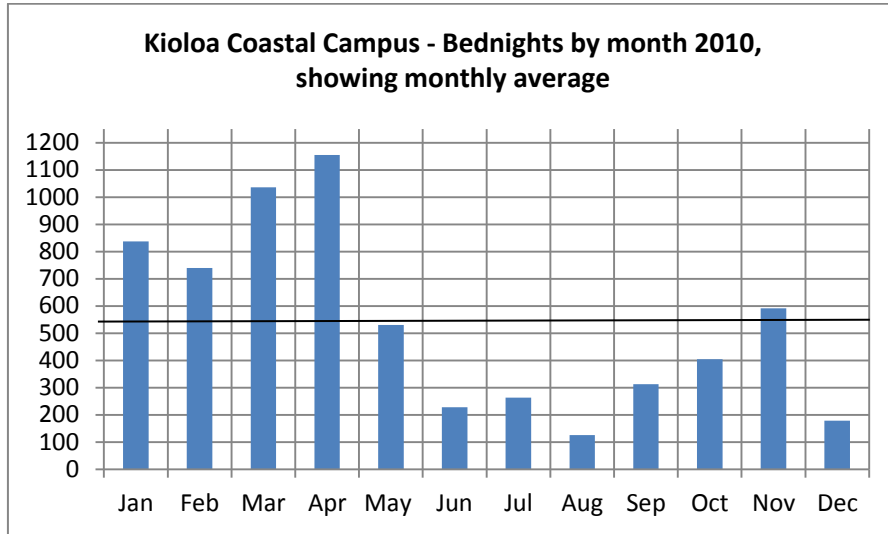


Graph 2 - Kioloa Coastal Campus – Bednights by month, 2005 - 2010



Based on the number of bednights for 2005 – 2010, the average yearly bednights over the 6 years from 2005 – 2010 were around 6,000, ranging from a low of 5,500 in 2005 to a high of 9,400 in 2008. Over this 6 year period, the average bednights per month was 500.

Graph 3 - Kioloa Coastal Campus 2010 - Bednights by month, showing monthly average for 2010

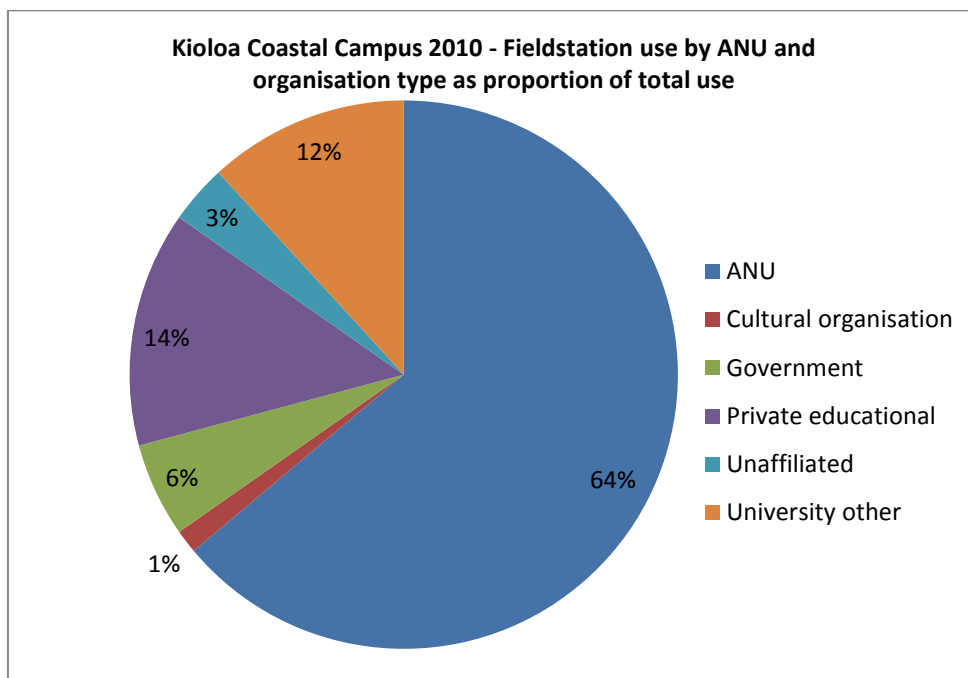


User nights or bednights by month in 2010 as shown in [Graph 3](#) illustrate that bednights in the early months of 2010 were similar to or higher than the same months in previous years. By month, bednights for 2010 averaged 534 per month, the highest number being in April 2010 at 1155 bednights.

Occupancy Data

Occupancy data of user groups by organisation type demonstrates that, although the proportion of Australian National University user groups (groups initiated/organised through the ANU) was 15% less than during 2009, ANU user groups continue to represent the highest proportion of user groups at the fieldstation at 64% of all user groups (see [Graph 4](#), below).

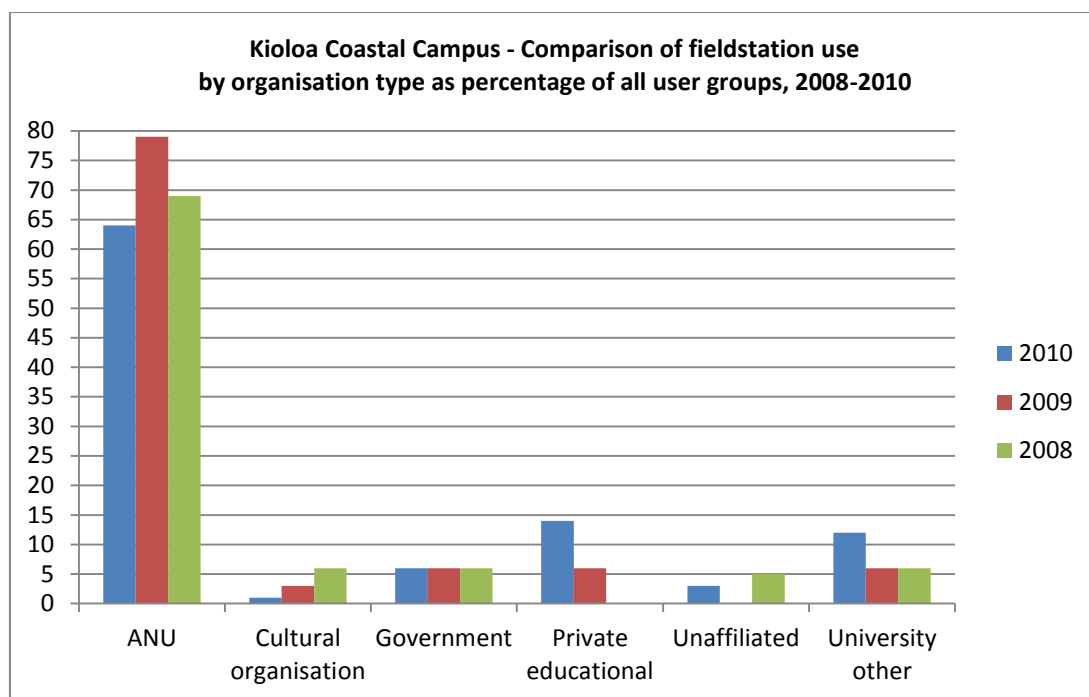
Graph 4 - Kioloa Coastal Campus 2010 - Fieldstation use by ANU and other organisation type, as proportion of total use



When combined with other universities (for example, the University of Wollongong, the University of Sydney, Charles Sturt University), during 2010 university user groups represented around 76% of all user groups at the fieldstation.

Organisations with an educational focus (ANU groups, other universities and private educational organisations (eg. Archaeology Australia, Alliance Francaise)), represented around 89% of all user groups during 2010, the same proportion as 2008. During 2010 the remaining 11% of user groups were Government groups (eg. the Forest Science Centre of NSW Department of Primary Industry), and ‘cultural groups’ such as Megaphon Studios, which undertook local field recordings for an audio-visual installation later exhibited at Wollongong City Gallery.

Graph 5 - Kioloa Coastal Campus – Comparison of fieldstation use by organisation type as percentage of all user groups, 2008-2010



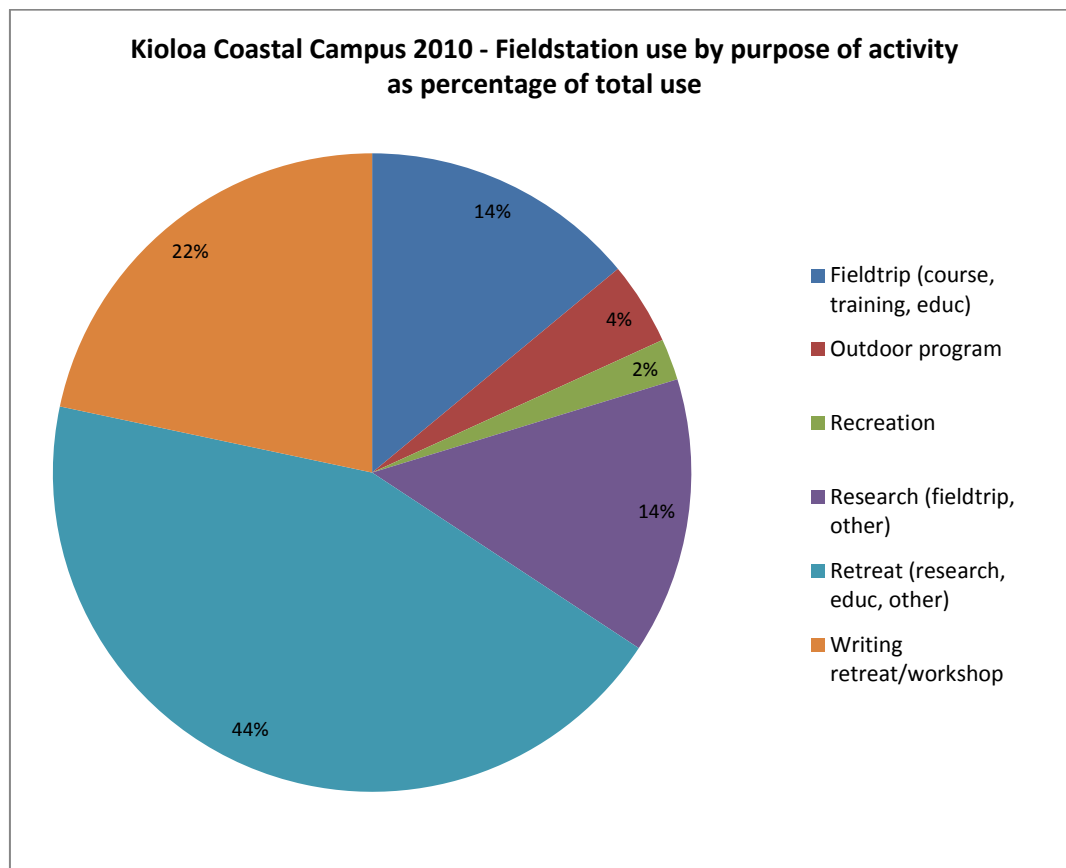
A comparison of user groups by organisation type over the 3 years from 2008 – 2010 in Graph 5 shows that the ANU’s use of the fieldstation decreased while user groups from other categories such as ‘private educational facilities’ and ‘other universities’ increased. As a proportion of all user groups, during 2010 the ANU represented 64% of user groups, compared to 79% in 2009 and 69% during 2008.

The largest user group activity category for 2010 was educational and/or research retreats or workshops at the fieldstation, represented by 44% of user groups (see Graph 6, below), similar to 2009. The new multi-purpose building under construction during 2011 will provide much needed facilities for such workshop, conference and retreat activities. Writing retreats (individually and as groups) increased as a proportion of user groups in comparison to 2009, representing the second largest user group category in 2010 at 22% (18% in 2009). The increase in demand for writing retreat facilities supports the need to provide a dedicated writing retreat facility at the fieldstation, allowing the allocation of group accommodation in the main accommodation areas, with a separate secluded retreat for writers.

Field courses and training, (eg. tertiary fieldtrips for coursework and research; outdoor educational programs for primary and secondary schools/colleges; Archaeology Australia field trips; DECC field training) remain a key purpose of groups visiting KCC, representing around 18% of user groups. Also of importance is the use of the field station as a venue for research, either as fieldwork or as a research activity, with 14% of user groups declaring research as their reason to visit the fieldstation.

In line with the Kioloa Advisory Board’s policy, recreational use of the fieldstation has continued to decline, and now represents only 2% of user groups.

Graph 6 – Kioloa Coastal Campus 2010 – Fieldstation use by activity as percent of total use



Fees and Charges

Fees and charges at the fieldstation remained steady during 2010. In 2009, facilities fees were introduced to partially offset maintenance and replacement costs, accommodation fees were increased by \$2.00 per bed night, and cancellation fees were introduced.

Table 1 - Kioloa Coastal Campus - Fees and Charges 2010

LOWER FIELD STATION				
Building	Description	People	Cost -excl GST	Details per room
Packard's	Dormitory x 4 bedr: 2 x 4 sleeping spaces 2 x 6 sleeping spaces Wheelchair access	20	\$22.00	Bedr 1 & 2 = 2 x 2 bunks Bedr 2 & 3 = 2 x 3 bunks
Kumasi	Dormitory x 4 bedr: 4 x 5 sleeping spaces	20	\$22.00	Per bedr = 2 x 2 bunks, 1 single bed
Schoolhouse	Dormitory x 3 bedr	6	\$22.00	Beds = 2 single beds
Groper	Cottage x 3 bedr	8	\$22.00	Bedr 1 = 2 single beds Bedr 2 & 3 = 2 bunks, 1 single bed
Peter's	Cottage x 3 bedr	8	\$22.00	As for Groper

UPPER FIELD STATION				
Cottage	Description	People	Cost -excl GST	Details per room
Walsh's	Cottage x 2 bedr Twin share	6	\$30.00	Bedr = 2 single beds Living room = 2 single foldout sofas
Collins'	Heritage Cottage x 3 bedr - 4 sleeping spaces	4	\$30.00	Bedr 1 = 1 double bed Bedr 2 & 3 = 1 single bed
Frankel's	Cottage x 3 bedr Twin share	6	\$30.00	Bedr 1 & 2 = 2 single beds Bedr 3 = 2 single foldout sofas
Barwick's	Cottage x 3 bedr Twin share Wheelchair access	6	\$30.00	Per bedr = 2 single beds
Nix's	Cottage x 3 bedr Twin share	6	\$30.00	Per bedr = 2 single beds
All bedrooms used for a single person = \$60.00 / night / person				
Holiday / Recreational use = 210.00 (incl GST) per cottage per night				

Building	Description	Fee
Laboratory	Laboratory facility, meeting area, separate study/workroom. Wireless internet. Fixed electric projection screen, digital projection facility. [Under refurbishment]	\$100.00 first day \$50.00 /day thereafter
Main Community Building	Large professional kitchen, small kitchen, dining area, toilets and hand basins. Wireless internet/Ethernet	\$150.00 / night
Walker's Community Building	Kitchen space, meeting areas, disabled toilet and hand basin. Wireless internet/Ethernet	\$75.00 / night

Table 2: Other Fees at Kioloa Coastal Campus

Surcharges and fees

Item	Fee (ex GST)
Use of individual cottage kitchen(s), in addition to dining/kitchen facilities in community building/s.	\$20.00 flat fee, first night \$10.00 per night thereafter
Use of Small Kitchen in the Main Community Building (in addition to accommodation)	Advised at time of booking (similar to kitchen fees, above)
Extra cleaning fee for use of cottage kitchens (if applicable)	Advised at time of booking
Single night stay surcharge (if applicable)	\$5.00 per person
Sole occupancy of bedroom	\$60.00 per night per person
Garbage disposal fee	Small group - \$15.00 Large group, other - \$20.00
Non-educational bookings	\$30.00/night/person in any part of the campus
Day visitors	\$12.00/day/person
Linen pack : Issued as a complete pack only. Includes sheet set (bottom/top sheet, pillowcase), blanket, doona & doona cover, bath towel, face washer, bath mat.	\$20.00 per pack

Development of Facilities 2010

The KCC Multi-Purpose Building

Construction on the new Multi-Purpose Building (MPB) was due to start at the Kioloa Coastal Campus in late 2010. This building has been designed as a purpose built facility to enhance the research and educational opportunities available to user groups at the fieldstation. The building will provide lecture,

discussion, workshop, conference and gallery spaces. The project architect, Paul Downton of Ecopolis (Adelaide) specifically designed the building to be consistent with the existing character of the fieldstation.

Construction of the building will be undertaken by the construction company Southpoint Building Services, with oversight by ANU Facilities and Services Division and assistance from local architect Katrina Scobie working with the project architect (Paul Downton), and liasing with KCC Management. Further costing issues around the necessary electrical upgrade and the waste management and fire management systems delayed the start of construction during 2010. Shoalhaven City Council development approval for construction was conditional on the upgrade of the wastewater and sewerage system for the whole Campus.

On Site Waste Management System

Using the \$200,000 provided through the R97 Campus-Wide activity budget as a one off grant to undertake for an on-site waste-management system (OSWM), construction of this system has been planned to synchronise with construction of the multi-purpose building late in 2010 or during 2011. The *A&A Worm Farm* system is the preferred choice for the fieldstation in terms of efficiency and long term sustainability.

ANU Green Funding

In 2009, the KCC Executive Officer, Bart Meehan, successfully sourced \$30,000 for funding for the Kioloa Coastal Campus to enhance sustainability. During 2010, these funds were used to install seven heat pumps to replace old electric hot water systems. Development and installation of the planned interpretive signage on the beachfront, beach car park and at the top of The Avenue near The Homestead will be undertaken as time allows.

Laboratory refurbishment

Completing the refurbishment of the Laboratory to provide a simple 'wet' laboratory facility with a range of basic working equipment for short/long term use by teaching or research groups is a priority during 2010 and 2011.

During 2008 and 2009 the external refurbishment of the building was completed, and internal building renovation was undertaken to construct of laboratory benches and purchase laboratory stools.

During 2011, in tandem with construction of the multi-purpose building, it is intended to complete the Laboratory refurbishment with the installation of pendant power, wastewater management and the connection of sinks, toilets and wet areas.

Refurbishment of the Dairy

With the removal of the asbestos lining boards in the old Dairy building, located west (behind) of The Homestead, a well preserved and constructed framework in the dairy was revealed. This framework is a sound basis for a relatively cheap and simple to renovation. Moruya architects Dual Design have put forward a sustainable design plan to refurbish The Dairy as a much needed writer's retreat ('The Diary'). When the process of approval for these plans is completed and funding identified, a Development Application will be lodged with the Shoalhaven City Council to undertake this renovation.

Field station Maintenance Program 2010

Routine maintenance tasks were carried out as part of the normal servicing of user groups.

The increased work for the Campus Manager associated with MPB planning, waste management planning, Fire Management planning, and other management activities has meant that a part-time contract worker has been employed to assist the Caretaker during much of 2010.

Tracking of maintenance tasks and planning was enhanced through updating KCC maintenance records onto a simple database structure.

Major maintenance (non-routine) undertaken during 2010 included:

Buildings and Grounds

- Installation of 7 heatpumps to replace old electric hot water services
- OH&S upgrade of working sheds and equipment started with purchase of storage cabinets
- Preparation and painting of Frankels and Walshs' cottages as part of a 7 year painting "round" for KCC infrastructure.
- OH&S electrical tagging carried out.
- Fire safety audit completed.
- Smoke alarm maintenance carried out.
- Fire extinguisher service carried out.
- Upgrading of KCC inventory and replacement of necessary items continues.

Land Management

- The up-date of Fire Management Plan is on-going.
- 'The Avenue' driveway, through accommodation area of the fieldstation, graded and maintained using new grader blade.
- The Homestead driveway area sealed to machinery shed, to reduce dust and erosion from heavy machinery use.
- Maintenance of fire trails through clearing of undergrowth and mulch mowing.
- Rabbit baiting program continues (2 baiting periods throughout the year)
- Fox trapping continues in conjunction with DECC and Rural lands Board, for protection of endangered shorebirds.
- Kangaroo management program as approved by DECC was discontinued due to animal welfare groups protests, and the potential for negative publicity affecting the ANU.
- Shorebird monitoring and protection continues.
- Indian Mynah bird trapping continues.

Pastures, Fencing and Water

- Continuation of fireweed removal and monitoring.
- Continuation of Bitou bush and sea spurge control in the fore-dune area, as well as feral garden plants including prickly pear and daisy.
- KCC camping area was fenced off to reduce wildlife damage to facilities and lessen risk of users picking up ticks.
- Wallensky's Dam fenced off, and reticulated water provided for cattle.
- A replacement solar pump and floating pontoon installed on the Spring Dam. Low water levels in this dam necessitated supplementation with water from Wallensky's dam.
- Main concrete tank for dam water reticulation repaired and roofed, new filter installed on dam water line.
- .Fencing of Butler's creek completed.

Machinery

- Hydraulic lifter installed on 4x4 Ford Ranger vehicle to allow lifting and loading of heavy items (OH&S).
- Hydraulic pump unit and fittings installed on KCC grader blade to allow full use of the implement from the tractor seat.

Livestock

Reconciliation of livestock at KCC for 2010 is provided at **Appendix A**.

5. Teaching and Research

Teaching and research in 2010

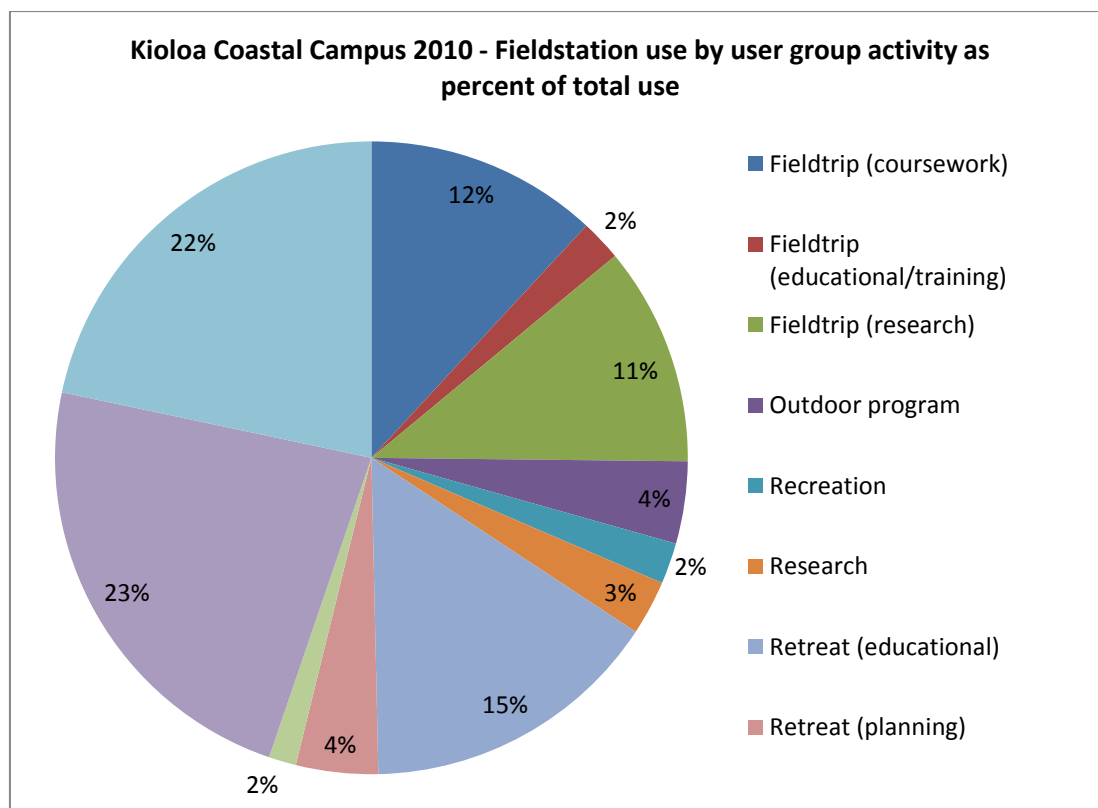
During 2010, research and education related activity at the Kioloa Coastal Campus represented 94% of all user group activity at the fieldstation. Specifically, as shown in [Graph 7](#), as a proportion of total use, 94 % of user groups visited the fieldstation for the purposes of fieldtrip/coursework, research fieldtrips, research work, educational and training retreats, research retreats/workshops and writing retreats. The remaining 6% of user groups visited the fieldstation for the purpose of recreation or planning retreats.

Research and education related activity continues to increase at the fieldstation, from 89% of all activities at the fieldstation in 2009, and 60% in 2008. The use of the fieldstation for writing retreats and workshops also continues to increase as a proportion of fieldstation use at 22% of total use in 2010, from 18% of total use in 2009 and 15% in 2008. This increase underlines the increasing need for a dedicated space for writing retreats, particularly to keep the main accommodation buildings free for the group activities for which they have been designed.

The increase in research and educational activity as a proportion of total use reflects the Kioloa Coastal Campus policy of discouraging recreational use to ensure fieldstation facilities are reserved for research and educational activities. This focus is also reflected in the decrease of recreational use of the fieldstation, down to 2% of all use in 2010, from 13% in 2008.

Cultural activities decreased to a statistically insignificant number of user groups during 2010, with the annual Harp Camp not held during this year, and other cultural activities cancelled in 2010.

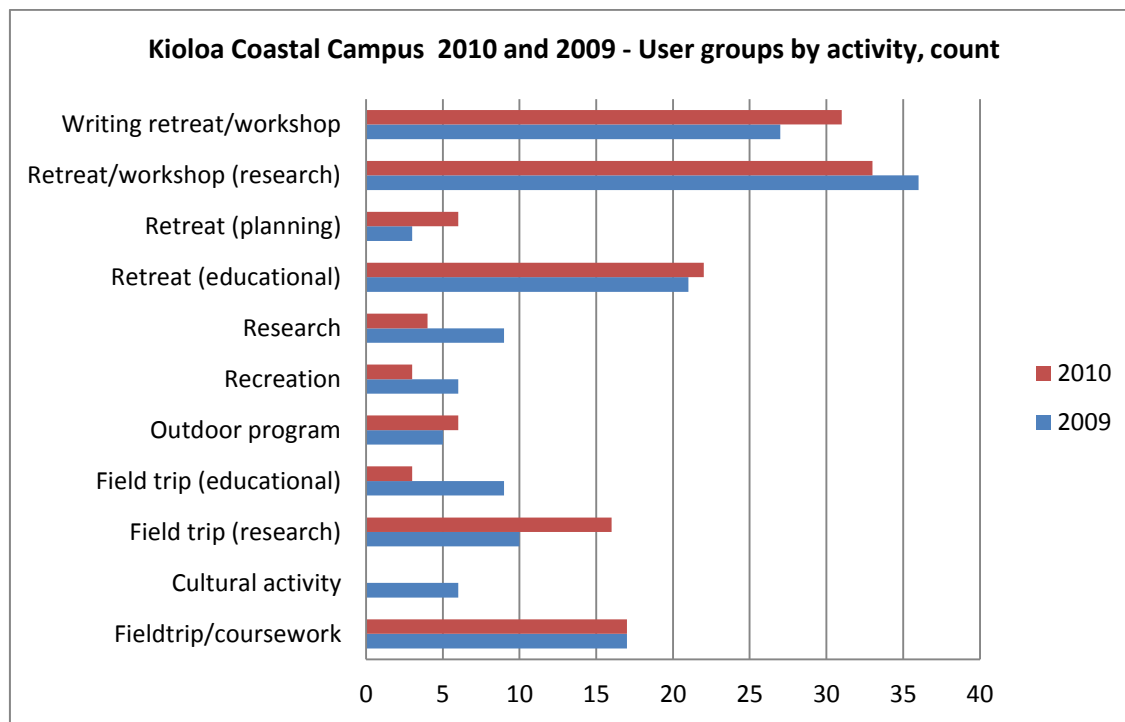
Graph 7 – Kioloa Coastal Campus 2010 – Fieldstation use by activity as percent of total



Writing retreats increased from 18% of group activities in 2009 to 22% percent during 2010.

Graph 8 further illustrates fieldstation user groups by activity, showing a count of user groups visiting the fieldstation by the purpose of their visit during 2010 and 2009. The bar graph clearly shows that during both years the four main reasons user groups visited the fieldstation were writing retreats/workshops, research retreats/workshops, educational retreats, and fieldtrips/coursework. During 2010 there was also an increase in fieldtrips (research).

Graph 8 – Kioloa Coastal Campus 2010 and 2009 – User groups by activity, count



Specific research conducted at the KCC during 2010 included:

- Forest Science Centre, DPI NSWGovt - Ongoing research frog habitats
- Visual Sciences, School of Biology, ANU – research on Jacky dragons (*Amphibolurus muricatus*)
- NSW DECCW – continued monitoring of Brush Island, Batemans Marine Park
- Continuing ethno-botanical research – Dr Judith Caton and Richard Hardwick.

Details of research and teaching activities at the field station are provided at **Appendix B**.

6. Kioloa Coastal Campus Finance 2010

The Joy London Endowment

The Joy London Fund or the Joy London Endowment was established by Council of the ANU in 1980 with donations from the Frankel family and the Fairfax Foundation. The fund is to be used to support educational activities at the Foundation and to facilitate the field research associated with these activities. Within these guidelines, the fund provides in-part support for research projects based at The Edith and Joy London Foundation, contributes to workshops and courses, and may also be used to provide scholarship support in the form of living expenses or supplementary funding to existing scholarships.

Pending developments with the new governance structure for the KCC, no call for applications to the Joy London Endowment was posted in 2010.

Application for support - Antonie Botes

Joy London Endowment reconciliation

Reconciliation of the Joy London Endowment fund is provided at **Appendix C**.

Budget Performance

The financial statement for 2010 for the Kioloa Coastal Campus budget unit is provided at **Appendix D**.

The 2010 financial statement for the Development Bank Loan to the KCC is provided at **Appendix E**.

The Kioloa Coastal Campus - Livestock Reconciliation 2010

Under the terms of the *Edith and Joy London Deed of Gift (1975)* with the Australian National University, specific activities are recorded as integral to the Foundation. These activities include farming and cattle breeding, as mentioned in the *Deed of Gift* in various clauses, for example:

A. *The donor shall convey her estate and interest in the land to the donee for University purposes which shall include student instruction in a number of disciplines, experiments and long-term research projects in geology, forestry, botany, marine biology, zoology, geography, pre-history farming and associated scientific studies from time to time decided upon by the donee.*

D. *The donor during her lifetime reserves the right to continue to use the said land for farming and cattle breeding and associated interests which she has conducted on the said land up to the present and to have the full benefit therefrom*

O. *If at any time before attaining the age of 65 years the donor from whatever cause is unable owing to ill health to conduct her farming and cattle activities the donee shall provide management for the property and accord an income for the donor as provided for in clause H hereinbefore set forth. Such income shall cease in the event of the donor resuming the control and management of her farming and associated activities*

Farming and cattle breeding have not been a focus activities or resource investment at The Kioloa Coastal Campus over the past 10 years, as reflected in the minimal farming and cattle breeding activity recorded in this report. The Kioloa Advisory Board re-affirms the importance of cattle farming at the field station, noting that this activity is of benefit through:

- improved fire management for the field station through maintaining cleared land and grazing areas;
- improved sustainability through an increased and diversified income stream, and;
- integration of activities at the field station, through inclusion of farming into the Kioloa Coastal Campus Land Management plan, Fire Management plan and the Caton *Biodiversity Report*.

Opening Livestock at 1 January 2010

21 cows	
21 calves @ foot	
5 weaner cattle	
1 bull	
TOTAL livestock @1Jan10	48 head

Sales 2010

19 steers	
7 heifers	
1 cow	
TOTAL sales:	27 head

Deaths 2010

1 cow	
-------	--

Closing livestock on hand 31 December 2010

19 cows	
14 calves @ foot	
1 bull	
TOTAL livestock @31Dec10	34 head

Research and educational activities at The Kioloa Coastal Campus 2010

Research activities – writing and research retreats

School of Economics, College of Business and Economics, ANU Completion of book manuscript (individual)

School of Economics, College of Business and Economics, ANU PhD writing weekend (individual)

School of Economics, College of Business and Economics, ANU Writing and research (individual)

School of Art, College of Arts and Social Sciences, ANU Art preparation research (individual)

Department of Government & International Relations, University of Sydney Completion of research paper (individual): long stay writing retreat (individual); collaborative research and writing (total of three visits)

Australian National Centre for the Public Awareness of Science, ANU PhD writing (individual) (three visits)

ANU College of Law, ANU Group retreat, PhD writing (three visits)

School of Political Science and International Relations, Research School of Social Sciences, College of Arts and Social Sciences, ANU PhD writing (individual)

School of Archaeology & Anthropology, Research School of Humanities and the Arts, College of Arts and Sciences, ANU PhD Archaeology writing retreat (individual)

School of Anthropology & Archaeology, Research School of Humanities and the Arts, College of Arts and Social Sciences, ANU PhD Anthropology writing retreat (individual)

Canberra Times P/L Research and writing

School of History, College of Arts and Social Sciences, ANU Research and writing (individual)

School of Philosophy, Research School of Humanities and the Arts, College of Arts and Social Sciences, ANU Research and writing (individual) (three visits)

MARCS Auditory Laboratories, University of Western Sydney Research and writing on koala lowered larynx

School of Finance & Applied Statistics, College of Business and Economics, ANU Research workshop global financial crisis

Neuroscience Division, John Curtin School of Medical Research, College of Medicine, Biology and Environment, ANU Research writing and planning retreat

Centre for Research in Computer Systems, Charles Sturt University Staff and postgraduate scholars writing retreat

School of Anthropology & Archaeology, Research School of Humanities and the Arts, College of Arts and Social Sciences, ANU Thesis writing (individual)

School of Philosophy, Research School of Humanities and the Arts, College of Arts and Social Sciences, ANU Writing research paper (individual); Writing chapters/articles (individual); Writing paper on content of perception (individual) (three visits)

Ecology, Evolution and Genetics, College of Medicine, Biology and Environment, ANU Writing research papers (individual)

RegNet, School of Regulation, Justice & Diplomacy, College of Asia and the Pacific, ANU Postgraduate group writing retreat

ANU Law Revue ANU Writing, rehearsal and performance retreat

Private individual 1 Research activities

Private individual 2 Research activities (long stay)

College of Arts and Social Sciences, ANU Research and writing (individual)

Retreats and workshops (research, planning and educational)

School of Music, College of Arts and Social Sciences, ANU 7th Annual Summer Harp Course and concert

Burgmann College, ANU Annual college leadership retreat

Toad Hall, ANU Annual senior resident leadership retreat

Burton & Garran Hall, ANU Annual student leadership retreat

Fenner Hall, ANU Annual student leadership retreat

Pasifika Australia, School of Culture, History and Language, College of Asia and the Pacific, ANU Annual Youth Workshop, secondary students of Pacific Island descent

Australian National Centre for the Public Awareness of Science, ANU Cross-cultural training

Emeritus Faculty, ANU Emeritus Faculty annual retreat

Alliance Francaise de Canberra French Immersion weekend

Alliance Francaise de Milton French Immersion weekend

College of Medicine, Biology and Environment and College of Physical and Mathematical Sciences, ANU PhB orientation weekend

Bosch Institute, University of Sydney Post-doctoral & post-graduate career development workshops

Australian Demographic Social Research Institute, College of Arts and Social Sciences, ANU Post graduate workshop

Trauma & Orthopaedic Unit, Canberra Hospital Research team retreat, workshops research design & statistics

Fenner Hall, ANU Resident Committee training

Bruce Hall, ANU Senior resident team and Common Room committee

Ursula College, ANU Senior residents leadership camp

National Youth Science Forum Staff training for NYSF

VISTA, National ICT Australia Summer school/retreat

ANU Medical Student's Society ANU Wellbeing group retreat

Kokoda Foundation Young Strategic Leaders Congress (held twice in 2010)

School of Archaeology and Anthropology, Research School of Humanities and the Arts, College of Arts and Social Sciences, ANU
Annual graduate retreat

Centre for Aboriginal Economic Policy Research, College of Arts and Social Sciences, ANU Annual retreat

Burton & Garran Hall Residents Committee, ANU Team building retreat 2011

Student Equity, Division of Registrar and Student Services, ANU Planning student equity school camp

Fenner Hall, ANU Professional development and team building retreat

Edwards Constructions Annual retreat

NSW Department of Trade & Investment, Regional Infrastructure & Services Fieldwork and workshop

National ICT Australia MSOO/SML/LRL/NICTA Annual research group retreat

School of Language Studies, College of Asia and the Pacific, ANU Annual workshop ARC project 'Language & Social Cognition'

National ICT Australia ANU and NICTA SWARM project meetings

Mt Stromlo Observatory, Research School of Astronomy and Astrophysics, College of Physics and Mathematical Sciences, ANU
Astronomical sciences workshop

Quantum Science, Research School Physics & Engineering, College of Physical and Mathematical Sciences, ANU
Atomic/quantum physics group retreat

Australian Institute of Aboriginal and Torres Strait Islander Studies Australian Languages Workshop

School of Philosophy, Research School of Social Sciences, College of Arts and Social Sciences, ANU Graduate student conference

Psychology, College of Medicine, Biology and Environment, ANU Honours retreat

Fenner School of Environment and Society, College of Medicine, Biology and Environment, ANU International environmental governance fieldtrip

John Curtin School of Medical Research, College of Medicine, Biology and Environment, ANU JCSMR academic retreat

National Centre for Epidemiology and Population Health, College of Medicine, Biology and Environment, ANU MAE retreat, curriculum workshop

Asia Pacific College of Diplomacy, ANU Master of Diplomacy student retreat

Fenner School of Environment and Society, College of Medicine Biology and Environment, ANU PhD/Master of Philosophy annual retreat

School Earth & Environmental Sciences, University of Wollongong Postgraduate retreat School Earth & Environmental Sciences

Immunology, John Curtin School of Medical Research, College of Medicine, Biology and Environment, ANU Scientific progress meeting NHMRC Program Grant collaborative team ANU, Garvan Institute, Monash University

School of Language Studies, College of Asia and the Pacific, ANU Symposium on etymology

Ecological Consultants Association of NSW Tree hollow assessment workshop

Centre for Applied Philosophy and Public Ethics, Charles Sturt University Workshop on the principle of assistance

Research School of Biology, College of Medicine, Biology and Environment, ANU Academic retreat

College of Business and Economics, ANU Annual PhD retreat

Research Network for Vegetative Function, Department of Biological Science, Macquarie University Australian Research for Vegetation Function, meeting of Working Group 63

School of Culture History and Language, College of Asia and the Pacific, ANU HDR student retreat

School of Finance & Applied Statistics, College of Business and Economics, ANU Graduate students, staff and international staff conference

Research School of Chemistry, College of Physical and Mathematical Sciences, ANU Group symposium

School of Philosophy, Research School of Humanities and the Arts, College of Arts and Social Sciences, ANU Metaphysics workshop

Neuroscience, John Curtin School of Medical Research, College of Medicine, Biology and Environment, ANU NSW/ACT Neuroscience Colloquium

School of Philosophy, Research School of Humanities and the Arts, College of Arts and Social Sciences, ANU Postgraduate philosophy research workshop

School of Music, College of Arts and Social Sciences, ANU Research, ARC project (individual)

School of Finance & Applied Statistics, College of Business and Economics, ANU Workshop & seminars behavioural aspects of financial decision-making

ARC Centre of Excellence in Vision Science, ANU Young Visionaries annual retreat

Strategic and Defence Studies Centre, School of International and Strategic Studies, College of Asia and the Pacific, ANU
Annual student and staff retreat

Field trips and coursework (training, educational, research, outdoor programs, teaching activities)

Department of Environmental Management & Ecology, La Trobe University Presenter, Open week, Kioloa Coastal Campus

School of Art, College of Arts and Social Sciences, ANU Drawing fieldtrip with visiting artist

Mt Stromlo Observatory, Research School of Astronomy and Astrophysics, College of Physics and Mathematical Sciences, ANU
Group retreat, fieldwork

School of Biological Sciences, University of Wollongong Field techniques training, surveying frogs, plants, mammals, birds

Field Naturalists Club of Canberra Field walks and investigation

NSW Department of Trade & Investment, Regional Infrastructure and Services Fieldwork (four visits)

Megaphon Studios Filming and audio recording bush habitats for installation at Wollongong City Art Gallery (two visits)
 Ecology, Evolution & Genetics, College of Medicine, Biology and Environment, ANU Fireweed fieldwork
 ANUgreen, Facilities and Services Division, ANU International interns, introduction to middens and beaches
 School of Art, College of Arts and Social Sciences, ANU Art camp international exchange students
 Marine Park Authority, NSW Office of Environment and Heritage Brush Island monitoring, Batemans Marine Park
 Forest Science Centre, NSW Department of Primary Industry Frog tadpole habitat fieldwork
 Visual Sciences, Research School of Biology, College of Medicine, Biology and Environment, ANU Jacky lizards research
 School of Biological Sciences, University of Wollongong 3rdyear Mollusc biology field camp
 Archaeology Australia with Rouse Hill Anglican College Archaeology workshop secondary school
 School of Biological Sciences, University of Wollongong Conservation biology 3rd year fieldtrip
 Fenner School of Environment and Society, College of Medicine Biology and Environment, ANU Geomorphology (southern
 tablelands/south coast) 3rdyear coursework
 Fenner School of Environment and Society, College of Medicine Biology and Environment, ANU GIS fieldtrip 2ndyear
 undergraduate coursework
 School of Language Studies, College of Asia and the Pacific, ANU Intensive field methods course
 Research School of Biology, College of Medicine, Biology and Environment, ANU Marine biology, undergraduate
 2ndyear coursework
 Fenner School of Environment and Society, College of Medicine Biology and Environment, ANU Undergraduate fieldwork
 1styear (two separate courses and visits)
 Fenner School of Environment and Society, College of Medicine Biology and Environment, ANU Undergraduate fieldwork
 2ndyear
 Fenner School of Environment and Society, College of Medicine Biology and Environment, ANU Undergraduate fieldwork
 3rdyear
 Research School of Earth Sciences, College of Physical and Mathematical Sciences, ANU Undergraduate fieldwork 3rdyear
 School of Anthropology & Archaeology, Research School of Humanities and the Arts, College of Arts and Social Sciences, ANU
 Graduate coursework, archaeological science field class
 Study Abroad & Exchange, University of Wollongong Field component, summer course international students
 Lake Ginninderra College, Art 'Art on Site' Secondary college student fieldtrip
 St Francis Xavier College, Science Year11 Biology (Ecology) fieldtrip
 Hash House Harriers Outdoor activities (running festival)
 Land's Edge Outdoor Education Outdoor education programs, secondary school students (four visits)

