



**The Kioloa Coastal Campus
The Edith and Joy London Foundation**

Annual Report 2008

Contents

- 1. Management and Administration**
- 2. Summary of activities 2008**
- 3. Goals 2009 and beyond**
- 4. Snapshot 2008**
 - Use of facilities
 - Occupancy data
 - Fees and charges
 - Development of facilities
 - Field station Maintenance
 - Land Management
- 5. Teaching and research in 2008**
- 6. The Kioloa Coastal Campus Finance 2008**
 - The Joy London Endowment (The Joy London Fund)
 - Budget performance

Appendices:

Appendix A - The Kioloa Coastal Campus - Livestock Reconciliation 2008

Appendix B - Details of activities at The Kioloa Coastal Campus 2008

Appendix C - The Joy London Endowment fund – reconciliation
[not provided in public document]

Appendix D - Financial statement 2008, The Kioloa Coastal Campus budget unit
[not provided in public document]

Appendix E - 2008 Development Bank Loan financial statement
[not provided in public document]

1. The Kioloa Coastal Campus Management and Administration

The Edith and Joy London Foundation (The Kioloa Coastal Campus (KCC)) continues to be managed by an Executive Officer, the Campus Manager, and the Kioloa Advisory Board, in line with specific guidelines set out in The Edith and Joy London Foundation *Deed of Gift*.

Membership of the Kioloa Advisory Board 2008

A/Prof Tim Senden	Chair, Dept Applied Mathematics, RSPSE
Mr Warwick Williams	Delegate, F&S
Prof Hans Bachor	Physics, Faculty of Science
Prof Marilyn Ball (to Dec 08)	Functional Ecology Group, RSBS
Dr Judith Caton	KCC Visiting Research Fellow; Applied Mathematics, RSPSE
Dr Alistair Greig	Schl of Social Sciences, Faculty of Arts
Dr Harvey Marchant (from Nov 08)	Schl of Biology, Faculty of Science
Prof Des Nicholls	College Bus & Economics, MMIB
Mr Bill Powell	Local community representative
Matt Stevens (to June 08)	Postgraduate student representative

Standing invited guest

Ms Joan Uhr	Director, Endowment for Excellence
-------------	------------------------------------

The Kioloa Advisory Board met formally on 4 occasions during 2008.

The Kioloa Coastal Campus - The Edith and Joy London Foundation

Management and administration 2008

The ANU

Eugene Wallensky (to June 08)	Executive Officer
Bart Meehan (from Sep 08)	Executive Officer

The Kioloa Coastal Campus (field station)

Steven Teding van Berkhout	Campus Manager
Richard Eldridge	Campus Caretaker
Robin Teding van Berkhout	Campus Administrator (1/2 time)
Francesca Baas Becking (from May 08)	Campus Administrator (1/2 time)

2. Summary of activities 2008

Highlights 2008

- Associate Professor Tim Senden agreed to Chair the Kioloa Advisory Board (KAB)
- The first KCC Executive Officer, Mr Eugene Wallensky retired (from November 2008), starting with long-service leave from June 2008
- Mr Bart Meehan (Associate Director, Business and Site Services, Facilities and Services, ANU) was appointed as new Executive Officer from August 2008
- Dr. Judith Caton was welcomed as KCC's first Visiting Fellow
- The KAB welcomed Prof Hans Bachor (Physics, Fac of Science) and Dr Harvey Marchant (Earth & Marine Science, Fac of Science) as KAB members during 2008
- KAB farewelled Prof Marilyn Ball, offering her a sincere vote of thanks for her contribution to the KAB and the Campus over past years
- KCC community outreach week, *Forest to Shore* (3 – 7 January 2009), was successful and well attended. The convener, Dr Judith Caton (KAB), organised an interesting program of excursions, lectures and activities, attracting over 550 visitors
- Refurbishment of the Laboratory was approved by Shoalhaven City Council in early 2008. The first stage of the refurbishment (internal renovation) was completed in 2008 (\$121K)
- Funding of \$2.4M approved from University Executive to support construction of the new Multi-Purpose Building. Mr Ian Duff nominated as the ANU Project Officer. Project commenced with lodgement of Development Application with Shoalhaven City Council in December 2008.
- Edwards Constructions selected as preferred builder for the new Multi-Purpose Building
- Preliminary broadband and wireless connection and IT Upgrade (\$140K) completed, from May 2008
- KAB and KCC approved construction of a microwave tower on the property by ATI Australia Microwave Radio Systems to provide a cheaper, higher bandwidth internet service to KCC
- Kioloa Coastal Campus Property Vegetation Plan prepared, in line with requirements of the Southern Rivers Catchment Management Authority, to enable harvesting of timber for the Multi-Purpose Building
- Review of Resourcing and Staffing prepared, proposing a staffing structure to take up the workload of the former Executive Officer position, leading to implementation of a new staffing profile for the KCC office. Staff now includes a second half-time Campus Administrator, to ensure Administration staff are on call in the office all week. Administrative and liaison roles of the former EO position shared between the Campus Manager and Administrators, under the direction of the new EO
- There was increased teaching and research use of the field station for the eighth year in succession. Total bed-nights for the year exceeded 9,000
- Yale Alumni Association visit to the ANU included a bush weekend at KCC, activities culminating in a bush dance – enjoyed by all
- A new KCC donation flyer was developed late in 2008; circulated during community outreach week
- Kioloa Coastal Campus ended the year with an operating surplus of approximately \$44,000 (see [The Kioloa Coastal Campus Finance 2008](#))
- Continuation of upgrade program for main fire trails on the property
- Replacement of Kioloa Coastal Campus 4x4 Hilux with new KCC 4WD Utility
- Purchase of grader blade for tractor to maintain upgraded fire-trails
- Purchase of a replacement diesel mower

3. Goals 2009 and beyond

Short-term Goals 2009

- After approval by Shoalhaven City Council, undertake construction phase of new Multi-Purpose Building (MPB), including new waste water management system
- Manage harvesting of timber from property for the Multi-Purpose Building (as approved by Southern Rivers Catchment Management Authority and DECC)
- Review of business operations model and costs for KCC
- Begin implementation of simple and low cost marketing strategies to maintain and/or increase usage of the KCC, specifically in anticipation of the completion of the Multi-Purpose Building. First part of marketing improvements will focus on a complete upgrade of the KCC website
- Undertake projections of capital and maintenance costs for 2010 and beyond, establishing budgets to accurately incorporate ongoing costs associated with the new KCC infrastructure - that is, MPB, wastewater system, IT infrastructure – as well as possible contingency amount annually
- Explore feasibility and extra costs associated with purchase of 100% green generated power for electricity supply; switch to Green Power if possible
- Continue renovation and refurbishment of Laboratory building, to eventually include reticulated saltwater aquarium system (de-salination/UV sterilisation plant and algal scrubbing system)
- Continue with landscaping of the property where needed
- Stabilise cleaning and housekeeping arrangements for KCC through the employment of a part-time housekeeper
- Increase teaching and research use of KCC, and explore the establishment of scholarships
- Undertake immediate maintenance program of facilities and infrastructure, including fire safety and OHS requirements
- Repair and maintain boundary and internal fences, and undertake other land management maintenance
- Continue with kangaroo management program and rabbit control program
- Continue to participate in Shorebird Recovery Program
- Continue to liaise with Organisation for Biological Fieldstations
- Update Fire Management Plan to dovetail with the Caton Biodiversity Report
- Formulate an overall Land Management Plan to reflect the requirements of the above Plan and Report, as well as the needs of stakeholders, including users of the facility. The Plan will place a high emphasis on sustainability.
- Establish both undergraduate and post-graduate scholarships, jointly funded with the Colleges. The undergraduate scholarship will go to a student from the South Coast region.
- Seek an agreement from the Colleges to underwrite an accommodation deposit, going hand-in-hand with a KCC policy on a deposit system.
- Restate the framework for the Joy London Endowment operation.

Long-term Goals

- Explore options for raising external funds for completion of the Laboratory refurbishment
 - Undertake strategic planning and logistical management to ensure effective marketing and use of new facilities provided by MPB
 - Predict future accommodation requirements, specifically post-MPB, and establish a sustainable carrying capacity for KCC – that is, available beds and room layout - to allow forward planning for new infrastructure requirements once the MPB is in use
 - Ensure Development Bank loan repayments can be met through maintaining usage rates
 - Continue to develop the KCC staffing profile as required, to properly reflect workloads on the property
 - Attract substantial contributions to the Joy London Endowment
 - Market the KCC to tertiary institutions, teaching organisations, cultural groups, government and non-government organisations nationally and internationally as a premier field research and teaching facility
 - Continue to develop the profile of the ANU and the KCC in the local and regional community through KCC/community outreach
 - Complete the landscaping of the accommodation areas of the KCC
 - Implement recommendations of the Fire management and Land Management Plans
-

4. The Kioloa Coastal Campus The Edith and Joy London Foundation Snapshot 2008

Use of Facilities

Under the terms of *The Edith and Joy London Foundation Deed of Gift (1975)* with the Australian National University, the purpose of the field station (The Foundation) is for teaching and research, as indicated in *Clause A of The Deed*:

A. The donor shall convey her estate and interest in the land to the donee for University purposes which shall include student instruction in a number of disciplines, experiments and long-term research projects in geology, forestry, botany, marine biology, zoology, geography, pre-history farming and associated scientific studies from time to time decided upon by the donee.

The Deed also stipulates that, as far as possible, the property be preserved in its current *natural and present state*, as follows:

B. The donee agrees so far as it is competent to do so to preserve the land in its entirety in its natural and present state as far as possible consistent with using it for University purposes as referred to above and shall not unnecessarily subdivide or develop it other than for University purposes. Such development to be carried out with a view to maintaining as far as practical its sense of simple natural environment. The donee may with the concurrence of the donor erect such building and / or fences as may be necessary or conducive for implementing University purposes.

In managing the field station and its facilities, priority is therefore given to best practice environmental and land management, sustainable development, and minimising user impact on the property.

Field station accommodation facilities are provided for the purpose of housing those involved in educational or research activities at the field station, and designed for minimal environmental impact.

Carrying Capacity

Carrying capacity estimations for Kioloa Coastal Campus are complicated by the accommodation variety available at the field station (4, 5, or 6 person dormitory style accommodation, 2 or 1 person bedrooms, fold-out beds, the number of rooms per building etc). Other issues such as specific group needs for individual rooms, group gender balances (separate males/females accommodation needs) also have an impact on potential occupancy levels. Currently a total of 90 beds are available at the field station, including fold-out sofa beds.

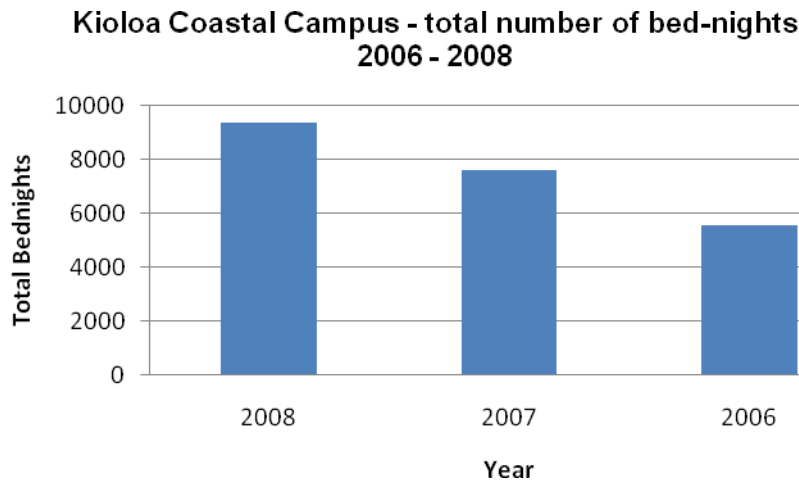
Calculating a full capacity occupancy rate by calculating occupancy at twin share for each room in the Campus over 12 months, full occupancy could be calculated at around 18,000 bednights per annum for the field station. Assuming all buildings and facilities at the field station are fully maintained and functional, current carrying capacity for Kioloa Coastal Campus would stand at c. 10,000 bednights p/a (without Laboratory refurbishment, or the new Multi-Purpose facility).

Capacity projections including in the impact of the new multi-purpose facility, and a completed Laboratory (fully equipped) would indicate a maximum of around 11-12,000 bednights per annum..

Use of facilities, 2008

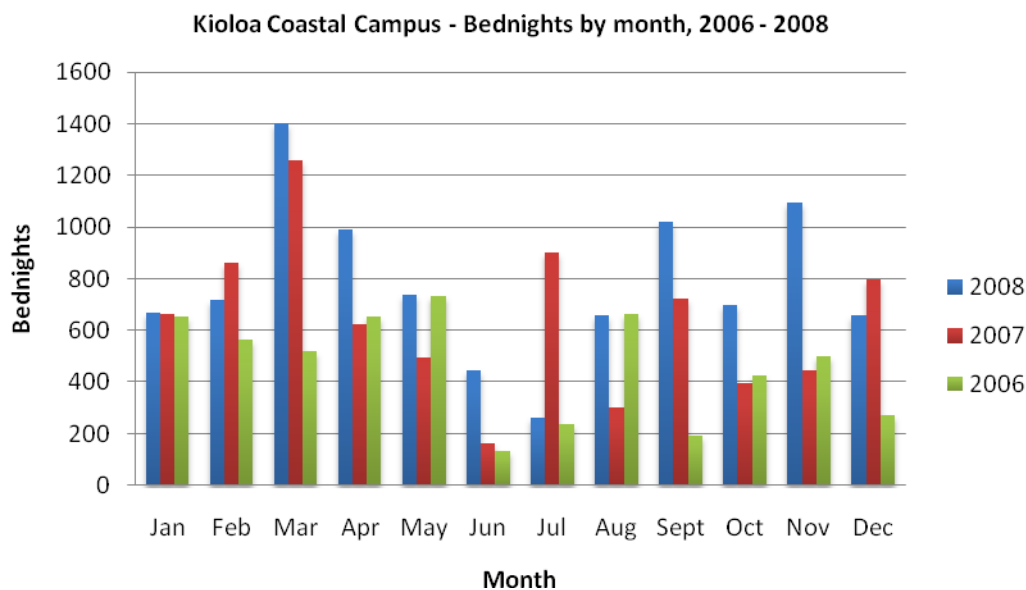
The Kioloa Coastal Campus was booked for use by around 170 separate groups in 2008. These groups comprised c. 3,540 people and generated over 9000 bed-nights, an increase of c.1500 bed-nights from 2007. The increase in bed-nights is demonstrated in [Graph 1](#), showing the bed-nights trend over the past 3 years.

Graph 1 - Kioloa Coastal Campus – Total bed-nights over 3 years, 2006 - 2008



Bed-nights by month are shown in [Graph 2](#), providing an indication of the variation in annual booking trends during the years 2006 - 2008.

Graph 2 - Kioloa Coastal Campus – Bednights by month over 3 years, 2006 - 2008

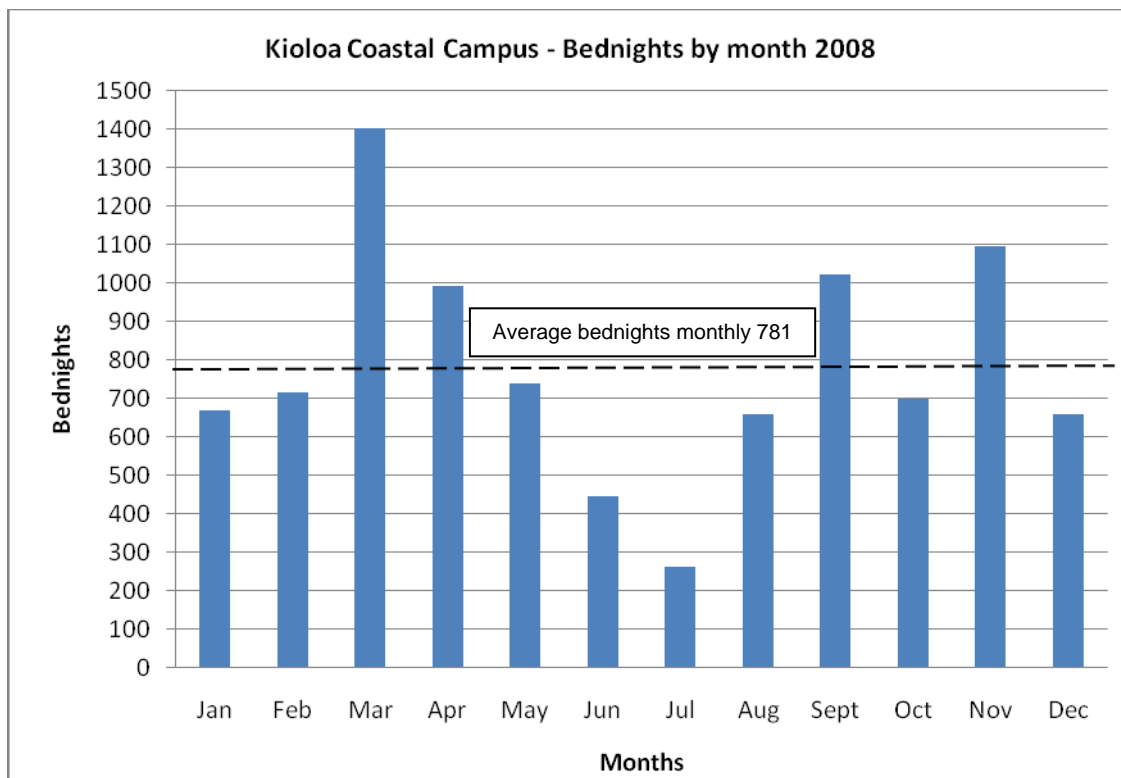


The impact of the Laboratory refurbishment on KCC usage is clearly demonstrated in [Graph 3](#) (below), showing that during June and July of 2008, usage of the KCC decreased in comparison to the general trend of a minimum of approx. 600 user nights per month (see [Development of facilities](#) for details of Laboratory refurbishment).

Average monthly bednights for 2008 calculate to c.780/month, ranging from over 1400 bednights in March to around 265 in July. By comparison, in 2007 the average bednights per month were c. 630 bednights, and for 2006 the average per month was c. 460 bednights.

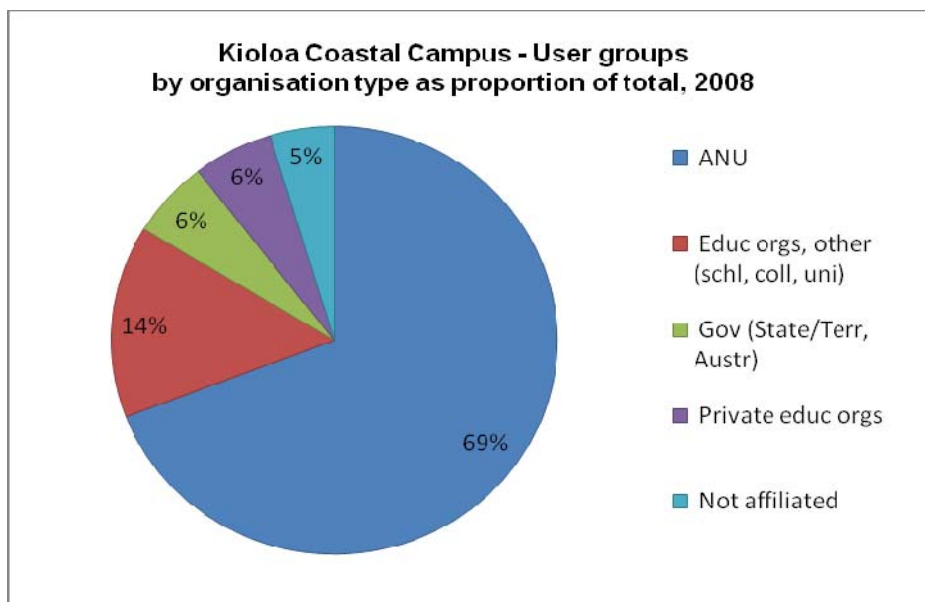
The median numbers of bednights for 2008 were 700 (October) and 718 (February).

Graph 3 - Kioloa Coastal Campus - Bednights by month, 2008 only



Occupancy Data

Graph 4 - Kioloa Coastal Campus user groups by organisation type, as a proportion of total, 2008

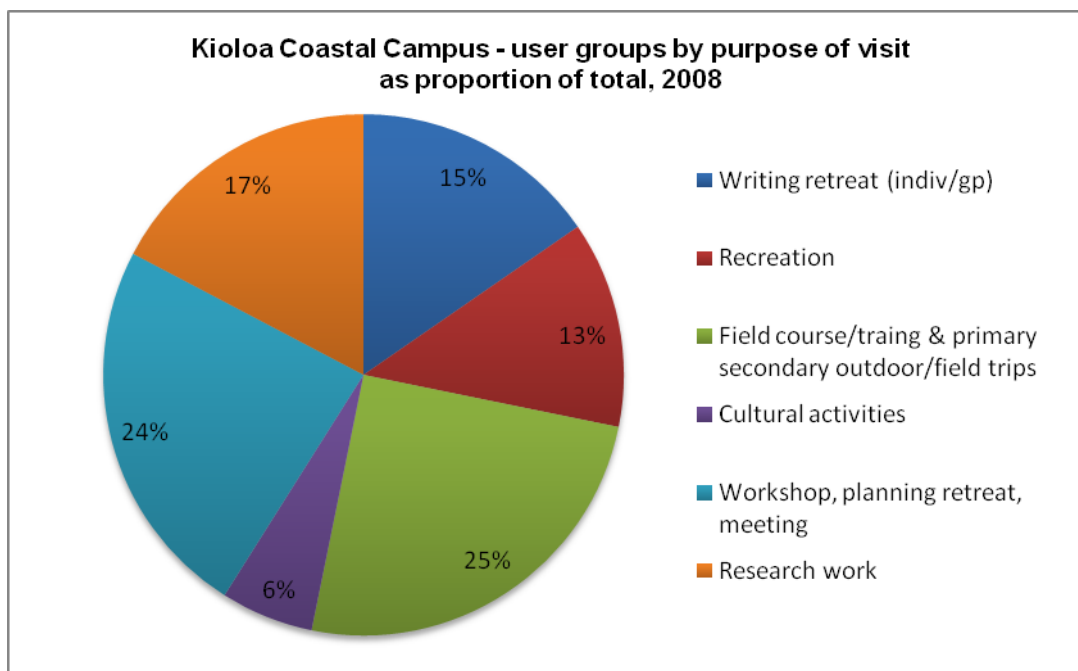


As demonstrated in Graph 4 (above), Australian National University user groups (or groups initiated by or organised through the ANU) represented almost 70% of total groups using the field station in 2008. Combined with other educational organisations – that is, the categories of ‘Educational organisations (schools, colleges, universities) and ‘Private educational organisations’ - educational organisations represented around 89% of total user groups at the fieldstation in 2008. The remaining c.10% of user groups were non-educational organisations, such as ‘Government organisations’ (e.g. DECC),

representing 6% of total user groups, and 'Non-affiliated' groups (e.g. private individual family groups), representing the smallest proportion of user groups at 5% of total groups by organisation type

As further shown in Graph 5 (below), when user groups are categorised by the purpose of their visit, it is clear that field courses and training, (such as tertiary field courses and trips, outdoor educational programs by primary and secondary schools/colleges, Archaeology Australia field trips, DECC field training) remain a key purpose of visiting KCC. Of almost equal importance is the use of the field station as a venue for workshops, meetings and planning retreats. Individual or group research work and writing retreats represent the next largest category of use, followed by recreational use, and lastly groups focusing on cultural activities (eg. The Summer Harp Camp)

Graph 5 – Kioloa Coastal Campus – User groups by purpose of visit, as proportion of total, 2008



Fees and Charges

2008 fees and charges in relation to accommodation at Kioloa Coastal Campus are itemised below.

Table 1 - Kioloa Coastal Campus - Fees and Charges 2008

LOWER FIELD STATION				
Building	Description	People	Cost -excl GST	Details per room
Packard's	Dormitory x 4 bedr: 2 x 4 sleeping spaces 2 x 6 sleeping spaces Wheelchair access	20	\$20.00	Bedr 1 & 2 = 2 x 2 bunks Bedr 2 & 3 = 2 x 3 bunks
Kumasi	Dormitory x 4 bedr: 4 x 5 sleeping spaces	20	\$20.00	Per bedr = 2 x 2 bunks, 1 single bed
Schoolhouse	Dormitory x 3 bedr	6	\$20.00	Beds = 2 single beds
Groper	Cottage x 3 bedr	8	\$20.00	Bedr 1 = 2 single beds Bedr 2 & 3 = 2 bunks, 1 single bed
Peter's	Cottage x 3 bedr	8	\$20.00	As for Groper

UPPER FIELD STATION				
Cottage	Description	People	Cost -excl GST	Details per room
Walsh's	Cottage x 2 bedr Twin share	6	\$28.00	Bedr = 2 single beds Living room = 2 single foldout sofas
Collins'	Heritage Cottage x 3 bedr - 4 sleeping spaces	4	\$28.00	Bedr 1 = 1 double bed Bedr 2 & 3 = 1 single bed
Frankel's	Cottage x 3 bedr Twin share	6	\$28.00	Bedr 1 & 2 = 2 single beds Bedr 3 = 2 single foldout sofas
Barwick's	Cottage x 3 bedr Twin share Wheelchair access	6	\$28.00	Per bedr = 2 single beds
Nix's	Cottage x 3 bedr Twin share	6	\$28.00	Per bedr = 2 single beds
All bedrooms used for a single person = \$56.00 / night				
Holiday / Recreational use = \$170.50 (incl GST) per cottage per night				

Building	Description	Fee
Laboratory	Laboratory facility, meeting area	\$ on enquiry
Community Building	Large kitchen, dining area, meeting area	\$ on enquiry
Walker's	Kitchen space, meeting areas	\$ on enquiry

Table 2: Other Fees at Kioloa Coastal Campus

Surcharges and fees

Surcharges	Surcharge (excluding GST)
Use of individual Cottage kitchens in addition to the dining facilities in the community buildings	\$20.00 flat fee for first night \$10.00 per night thereafter
Single night stay (if applicable)	\$5.00
Fees	Cost (excluding GST)
Garbage disposal fee	Small group - \$15.00 Large group, other - \$20.00
Non-educational bookings (secondary/tertiary)	\$28.00/night/person in any part of the campus
Day Visitors	\$12.00/day/person
Linen pack Issued as a complete pack only. Includes: Sheet set (incl. pillowcase), blanket, doona with doona cover, bath towel, face washer, bath mat	\$20.00 per pack
NOTE - Lengthy stays at KCC will attract a cleaning surcharge, to be advised when bookings are confirmed.	

Development of Facilities 2008

- Laboratory refurbishment 2008**

Stage 1 of the Laboratory refurbishment was completed during 2008, focusing on internal building renovation, with works commencing in June 2008. The Laboratory refurbishment aims to eventually provide a simple 'wet' laboratory facility with a range of basic working equipment, to allow short/long term use by teaching or research groups. This was the original envisaged use when the Laboratory was constructed in 1979. It should be noted that 2008 was the first time any maintenance or refurbishment work has been carried out on the interior of the building. The allocated budget for the first stage of refurbishment was \$100K; final costs ran to \$121K. Taking into consideration overdue internal renovation of the building, the final cost of Stage 1 of the Laboratory refurbishment is well within expectations.

Stage 2 of the Laboratory refurbishment involves the addition of a salt water reticulation system, originally planned to allow the Department of Earth and Marine Sciences to incorporate marine sciences fieldwork at KCC into their course structure. The benefits to KCC could be in the order of an extra 1000 bed nights p.a. The KCC could also market to broader range of users.

Breakdown of costs for Stage 1 of the Laboratory refurbishment is itemised on the following page:

Table 3 - Cost Breakdown, Laboratory Refurbishment Stage 1 2008

Item	Cost \$
Benches and joinery, including installation	55,000
Preparation and painting	21,000
Plumbing; fittings, pipes, other.	6,000
Bench and sink frames; manufacture and hot-dip gal.	6,000
Electrical	5,000
Blinds	5,000
Security screen doors	7,000
Timber, plasterboard lining, FC sheet, insulation, waterproofing, fixings	3,000
Heat pump	4,000
PC items; sinks, toilets, emergency shower, boiling water unit	2,000
IT	1,000
Casual labour	4,000
Sundry items	2,000
TOTAL	\$121,000

Full use of the Laboratory as a wet Laboratory is dependent on completion of the Multi-Purpose Building, which will allow the Laboratory to revert to its intended use as a working wet-lab through proper placement of laboratory benches and pendant power, as well as the wastewater management system for connection of sinks and wet areas.

- **Completion of IT upgrade 2008**

A preliminary upgrade of broadband facilities to KCC was undertaken early in the year, with provision of optic-fibre cable from the Telstra supply line to the distribution node in Packard's Dormitory. This replaced the radio link provided by the local ISP (<scostnet>).

Following the retirement of the KCC Executive Officer in June, transfer of administrative duties to the KCC, the appointment of a second half time Administrator and the IT upgrade, refurbishment of the KCC office was undertaken in order to provide a suitable shared office environment. The office upgrade included provision of new computers (1 provided courtesy of the Dept of Applied Maths), a server to enable office networking, donation of a printer/ scanner/fax machine (courtesy of the Dept of Applied Maths), and new office desks, shelves, storage cupboards and filing cabinets, to a total cost of \$16K.

- **ATI Tower 2008**

A further upgrade for the provision of high bandwidth internet was planned through the ANU Division of Information. High bandwidth internet will provide a cost-effective microwave link with direct access to the ANU as part of a network set up to include Mt. Stromlo, and Medical School facilities at Bateman's Bay and Bega.

After a thorough and substantial site assessment, the final location for the tower was chosen to be located behind the Joy London Homestead. A 15 metre high concrete monopole will be erected there in early 2009.

- **Multi-Purpose Building planning 2008**

Planning for the Multi-Purpose Building (MPB) continued through 2008. Key aims are:

- To create a purpose built facility at the KCC which is comparable to the world's premier field stations
- To meet current and projected user demand at KCC
- To enhance the suite of facilities available at the KCC, and allow active marketing of the field station, through building a large, multi-use space
- To provide a building consistent with the existing character of the field station and the site, providing a link between the buildings, history and natural environment
- To create an ESD showcase, both in terms of design/construction and life cycle costs

MPB milestones during 2008 included:

- Concept design competition (Sept 2007). Outcome: selection of Mr. Paul Downton of Ecopolis Architects, Adelaide to develop his design: "The Shed".
- Value management study, March 2008.

- Selection of builders, April 2008. Edwards Constructions of Bateman's Bay were selected as the preferred contractor following expressions of interest from and interview of 5 contractors.
- Budget approval. September 2008. A total budget of \$2,400,000 was approved for the project by the Vice Chancellor from the following sources:

Bond Issue Budget (IAB)	\$1,600,000
Development Bank Loan	\$500,000
Environmental Funding	\$300,000
- Final Sketch Plan reviewed, November 2008
- Development Application (DA) submitted to Shoalhaven City Council, December 2008

The MPB Project Steering Group comprises:

Warwick Williams	Chair, Director Facilities and Services
Bart Meehan	Client, Associate Director, Facilities and Services
Ian Duff	Project Coordinator, Facilities and Services
Paul Downton	Architect, Ecopolis Architects
Katrina Scobie	On Site Architect, Dual Design Architects
Brian Lane	Advisor, Facilities and Services
Steven Teding van Berkhout	User Coordinator, Client on site Rep. Kioloa Coastal Campus
Construction	Edwards Constructions, Bateman's Bay.

- **Wastewater Management / Sewerage System**

Council DA approval for construction of any future buildings on the KCC was conditional on the upgrade of the wastewater and sewerage system for the whole Campus. A sum of \$200K was provided from the R97 Campus Wide activity budget as a one of grant to undertake this work.

Hydraulics consultants, JCL Development Solutions, were engaged to provide a site assessment and provide plans for DA approval. Their plans were submitted to Shoalhaven City Council as part of the MPB DA in December. Environmental sustainability was again the key driver of design, with 2 systems in the final assessment:

- "AA Worm Farm" system
- "Biolytix" system.

Installation of the preferred system will be included as part of the MPB project.

Field station Maintenance Program

Routine maintenance tasks were carried out as part of the normal servicing of user groups; however, 2008 proved a difficult year for making significant inroads into backlog maintenance. This limitation was caused by:

- The Laboratory refurbishment, stage 1. The strip-out and refurbishment of the Laboratory was largely carried out by KCC staff, using time normally spent on backlog maintenance
- Re-arrangement of work responsibilities, administration workloads and procedures following the staffing review after the retirement of the EO
- Significant time for MPB planning and planning organisation, including the preparation of the DA and the Property Vegetation Plan
- Significant increase in KCC user numbers, and therefore staff workloads

Major maintenance (non-routine) undertaken during 2008 included:

- **Buildings and Grounds**

- Electrical work. Provision of new earthing rods to some buildings; disconnection of power supply from dairy to the cottage dam (poor wiring, faulty poles); replacement of faulty gpo's where necessary; further rearrangement of phase distribution to better cope with winter power usage
- Improved wireless coverage through provision of routers in strategic locations
- Repair and re-roofing of pump shed and overhaul of 3-phase pump
- Provision of coat hooks and towel rails
- Re-fit of paper towel dispensers to allow switch to more economical "green" sourced products
- Re-fit and safety check on Main Community/Amenities building gas range.
- Gutter repairs to Groper's Cottage and Kumasi Dormitory.
- Re-planting of unhealthy trees along The Avenue, plus mulching.

- **Land Management**
 - Access track maintenance along the beach front
 - Maintenance of fire trails through clearing of undergrowth and mulch mowing
 - An extensive rabbit control program was undertaken around the KCC buildings and along 1.5 kilometres of fore-dune which was heavily infested. 480 kg of carrot bait was distributed and post baiting inspection showed it had been very effective, with minimum by-kill observed.
 - Fox trapping in conjunction with DECC and Rural lands Board for protection of endangered shorebirds.
 - Shorebird monitoring.
 - Indian Mynah trapping, including hosting a field day for the community.

- **Pastures, Fencing and Water**
 - A significant amount of time was spent on control (removal by hand) of a large infestation of fireweed. Monitoring is continual.
 - Effort was also put into control of Bitou bush on the fore-dune as well as feral garden plants including prickly pear and daisy.
 - Holding yards and a laneway were fenced around the cattle yards to facilitate easier handling of livestock.

- **Machinery**
 - Heavy usage of the KCC Fiat tractor necessitated a major overhaul of the front axle and major service of the motor and driveline – carried out by KCC staff and Fiat service agent. The tractor is now 14 years old.
 - The KCC Ferguson tractor was also overhauled by KCC staff and brought back into service. This tractor is 44 years old.
 - The KCC Kubota diesel mower was replaced with a similar low hour model at a cost of \$11K.
 - A heavy duty hydraulic three point linkage grader blade was purchased to enable regular maintenance of Moore's Road and fire trails.

- **Livestock**

Reconciliation of livestock at KCC during 2008 is provided at **Appendix A**.

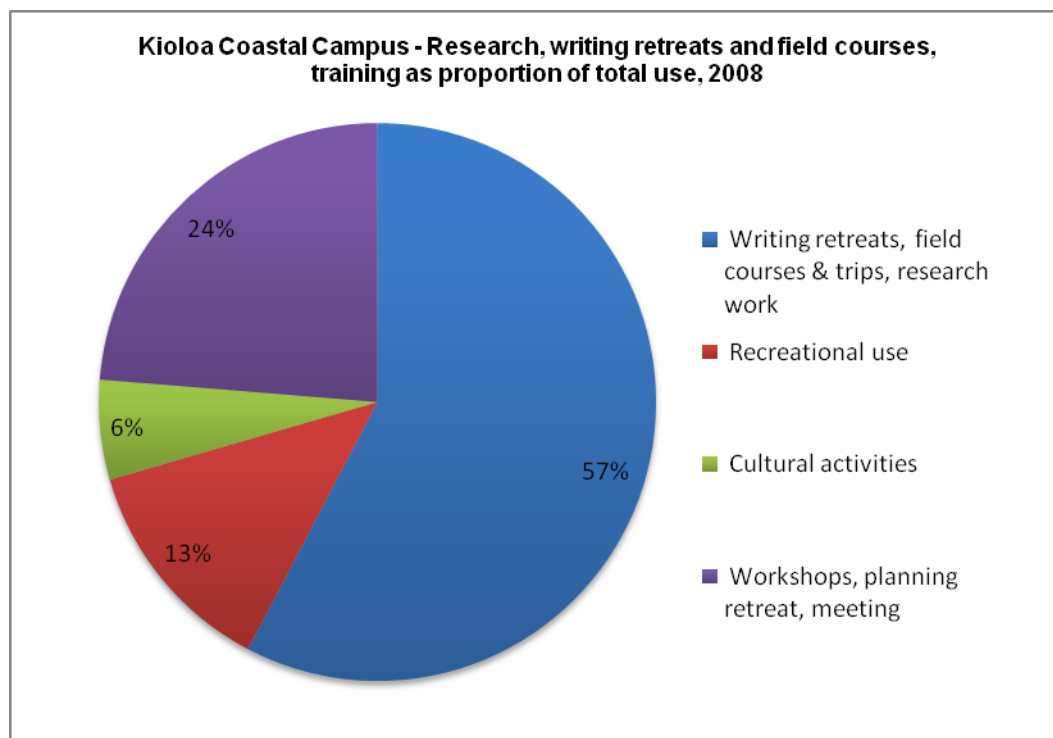
5. Teaching and Research

Teaching and research in 2008

The Kioloa Coastal Campus appears well established as a research and teaching venue.

In 2008, around 60% of all activities at the field station were related to teaching and research, as demonstrated in [Graph 6](#), below. Teaching and research activities include group/individual research activities, writing retreats (individual and group retreats), field courses, field trips, field training and other educational activities.

Graph 6 – Kioloa Coastal Campus – Research, writing retreats, field courses and training as proportion of total use, 2008



Specific research projects conducted at the KCC during 2008 included:

- Sooty Oystercatcher behavioural research – PhD research, Lucy Aplin (Dept of Botany and Zoology)
- Continuing ethno-botanical research – Dr. Judith Caton and Richard Hardwick
- Behavioural research on Jacky Lizard movement – Post-doctoral research lead by Dr. Richard Peters

Details of research and teaching activities at the field station are provided at **Appendix B**.

6. Kioloa Coastal Campus Finance 2008

The Joy London Endowment

The Joy London Fund or the Joy London Endowment was established by Council of the ANU in 1980 with donations from the Frankel family and the Fairfax Foundation. The fund is to be used to support educational activities at the Foundation and to facilitate the field research associated with these activities. Within these guidelines, the fund is used to provide in-part support for research projects based at The Edith and Joy London Foundation, to contribute to workshops and courses, and, most recently, to provide scholarship support in the form of living expenses or supplementary funding to existing scholarships.

- **Applications received 2008**

A call for applications to the Joy London Endowment was posted on the ANU Billboard on 16 July 2008. The application received from DEMS (ANU), applying for one-off support for field work course planned to be held annually at the KCC, was the only application received.

- **Workshop Support**

The KAB supported the application by DEMS as part funding for a fieldwork course to be held annually at Kioloa Coastal Campus.

- **Scholarships**

The KAB provided in principle support for a Joy London Endowment contribution to scholarship support in the form of top-up funding for existing scholarships. These remain to be established formally:

- Under-graduate scholarship support. Funds from the Endowment, matched by an ANU School, to provide living expenses support.

Estimated total of Joy London Endowment contribution annually: \$3,000.

- PhD scholarship support. Top-up funding for living expenses to an existing scholarship. The PhD would need to be research of significance to the Kioloa Coastal Campus.

Estimated total of Joy London Endowment contribution annually: \$3,000.

- **Joy London Endowment reconciliation**

Reconciliation of the Joy London Endowment fund is provided at **Appendix C [ANU Management only]**

Budget Performance

The financial statement for 2008 for the Kioloa Coastal Campus budget unit is provided at **Appendix D [ANU Management only]**

The 2008 financial statement for the Development Bank Loan to the KCC is provided at **Appendix E [ANU Management only]**

The Kioloa Coastal Campus - Livestock Reconciliation 2008

Under the terms of the *Edith and Joy London Deed of Gift (1975)* with the Australian National University, specific activities were recorded as integral to the Foundation, including farming activities and cattle breeding. These are mentioned in the *Deed of Gift* in various clauses, for example:

A. *The donor shall convey her estate and interest in the land to the donee for University purposes which shall include student instruction in a number of disciplines, experiments and long-term research projects in geology, forestry, botany, marine biology, zoology, geography, pre-history farming and associated scientific studies from time to time decided upon by the donee.*

D. *The donor during her lifetime reserves the right to continue to use the said land for farming and cattle breeding and associated interests which she has conducted on the said land up to the present and to have the full benefit therefrom*

O. *If at any time before attaining the age of 65 years the donor from whatever cause is unable owing to ill health to conduct her farming and cattle activities the donee shall provide management for the property and accord an income for the donor as provided for in clause H hereinbefore set forth. Such income shall cease in the event of the donor resuming the control and management of her farming and associated activities*

Farming and cattle breeding have not been a focus activities or resource investment at The Kioloa Coastal Campus over the past 10 years, as reflected in the minimal farming and cattle breeding activity recorded here. The Kioloa Advisory Board wishes to re-affirm the importance of cattle farming at the field station, noting that this activity is of benefit through:

- improved fire management for the field station through maintaining cleared land and grazing areas;
- improved sustainability of the property through increased and diversified income stream, and;
- integration of activities at the field station, through inclusion of farming into the Kioloa Coastal Campus Land Management plan, Fire Management plan and the Caton *Biodiversity Report*.

Livestock Reconciliation

Opening livestock 1 January 08	25cows 11 calves @foot. 1 bull TOTAL OPENING STOCK @1Jan08	37 head
Sales	<p>Milton Sale 5 May 2008 3 barren cows 3 bull calves 3 vealer heifers Total: 9 head</p> <p>Milton Sale 1 December 2008 6 vealer heifers 6 vealer steers Total: 12 head TOTAL SALES:</p>	21 head
Purchases	1 Limousin bull TOTAL PURCHASES:	1 bull
Deaths	1 bull (cancer – destroyed) TOTAL DEATHS:	1 bull
Livestock on hand 31 December 08	22 cows 15 calves@ foot 1 bull TOTAL LIVESTOCK @31Dec08	38 head

Details of activities at The Kioloa Coastal Campus 2008

Courses, Summer Schools, Field trips, Training

- NSW Dept of Environment and Climate Change personnel training - theory field training, prescribed burning (theory)
- NSW Dept of Environment and Climate Change Divisional Commander training program
- NSW Dept of Environment and Climate Change (NPWS) Crew Leader course; fire training
- Bi-annual Australasian Summer School for Social Psychology, Dept of Psychology ANU
- ANU Halls of Residence (Ursula, Fenner Hall, John XIII, Burton & Garran) Student Leadership Training and Senior Resident Training
- Geomorphology field trip, Fenner Schl of Environment and Society, ANU
- PhB induction camp, BGOS fieldtrip, Fac of Science, ANU
- Field component of summer session, Woolyungah Indigenous Centre, University of Wollongong
- Conservation Biology field camp – 3rd yr, Schl of Biological Sciences, University of Wollongong
- GIS field trip day excursion, Fenner Schl of Environment and Society, ANU
- Field Studies in Behavioural Ecology - 3rd yr fieldwork, Schl of Botany and Zoology, ANU
- SRES various field trips (teaching, fieldwork, specific graduate and undergraduate field trips), Fenner Schl of Environment and Society, ANU
- Marine research training – 2nd yr students, Schl of Botany and Zoology, ANU
- Student Induction course, Demography and Sociology, ANU
- Environmental biodiversity field study, Stromlo High School, ACT
- South Coast archaeological sites field trip, Canberra Archaeological Society
- Marine paleontology course, RSES, ANU
- IARU Summer School ('International Environmental Policy' course), Fenner Schl of Environment and Society, ANU
- Photography & media arts – 1st yr students, Schl of Art, ANU
- PhD school and Master Class, ARC Research Network in EII (Uni of Qld)
- Various field-based courses - graduate and postgraduate in Arts, Biology (biodiversity), Archaeology, ANU
- Wildlife training school – Govt agencies, Forestry, ecological consultants
- Machine Learning Summer School, Computer Science Lab, RSISE, ANU
- *Lands Edge* outdoor programs (some schools twice): Knox Boys Grammar, Barker College, Marist College, Pimble Ladies College
- *Archaeology Australia* archaeology field trips (some schools twice); Rowse Hill Anglican College, Sydney University CCE, Mary McKillop College

Planning Retreats, Study Retreats

- Executive Leadership Development Program, MMIB, ANU
- Scientific, career, team building workshop - post-graduate/post-doctorate scholars, Bosch Institute, University of Sydney
- Annual student retreat, Strategic and Defence Program, RSPAS, ANU
- Graduate field of study retreat, Anthropology, RSPAS, ANU
- Retreat and planning workshop, Dept of Engineering, CSES, ANU
- ARC Discovery Project planning retreat, Archaeology & Anthropology, RSPAS, ANU
- Graduate retreat, Dept of Engineering, CSES, ANU
- AIFA retreat
- Honours class retreat, Schl of Psychology, ANU
- PhD camp, CBE, ANU
- PhD retreat, College of Business and Economics, ANU
- IARU Bachelor of Sustainability retreat – interns, ANUGreen, ANU
- Research retreat (increasing research skills, ANU Medical School)
- Honours students group work, Fenner School of Environment and Society, ANU
- Cultural Weekend Retreat, National Europe Centre, ANU
- Graduate student retreat, Dept of Human Geography, ANU
- Annual planning retreat, Centre for Aboriginal Economic Policy Research, ANU

Workshops, Meetings, Conferences

- Outreach workshop in Pacific Studies (secondary schools/college students), Pacific Studies Program, ANU
- North East Asian History workshop, Pacific and Asian History, RSPAS, ANU
- Young Strategic Leaders Congress, Kokoda Foundation
- Japan-Korea Workshop, Asia Rights Project, Pacific and Asian History, RSPAS, ANU
- Epistemology workshop, Philosophy, RSSS, ANU

- Australian Languages Workshop, Schl of Language Studies, ANU
- CELEGANs meeting, workshop, Dept of Genetics, ANU
- Meeting of Landscape Fire Succession Group, Fenner Schl of Environment and Society, ANU
- Neuroscience Colloquium, JCSMR, ANU
- Young Visionaries workshop and retreat, RSBS, ANU
- Annual meeting, Wildlife Diseases Association, Dept Agriculture, Fisheries and Forestry NSW
- Seminars and workshop, Sherburn group, Research School Chemistry, ANU
- Atom Optics Group Workshop, Dept Physics, ANU
- COSnet ERC Workshop, Dept Theoretical Physics, RSPSE, ANU
- PhD workshop, RSES, ANU
- Emeritus Faculty weekend, ANU
- Genomic Interactions Group workshop, RSBS, ANU
- Postgraduate conference, Schl of Biological Sciences, University of Wollongong
- Post-graduate conference, Philosophy, ANU

Research activities, writing retreats

- Assessment of sites for fieldwork, RSES ANU
- Post-graduate research workshop, Fenner Schl of Environment and Society, ANU
- Research planning (insect-plant interaction), PhD and Honours scholars, Schl of Botany and Zoology, ANU
- Writing workshop - strategic assessment of Australia's vulnerability to climate change, Dept of Climate Change
- RegNet writing retreat with facilitator, RSPAS, ANU
- Research retreat (increasing research skills) ANU Medical School
- Teaching preparation Master of Applied Epidemiology 2007, ANU
- Writing and research retreat (ultra-magnetised neutron stars)
- Research and field testing activities, for example, survey of plant and fungus diversity, Dept of Botany and Zoology, ANU
- Group thesis writing retreats, for example Centre for Public Awareness of Science, ANU
- Research and planning retreat, NICTA, RSISE, ANU
- Various collaborative research and writing retreats; for example, ANU and Murdoch University, ANU and Harvard University
- Various individual writing retreats, PhD – ANU departments and schools including Political Science, National Europe Centre, Philosophy, RSISE, Information Engineering Program, RSSS, Archaeology and Anthropology, Jabal Centre, RSES, College of Business and Economics
- Various study retreats, ANU departments and schools including Political Science (ANU), CIT, Schl of Art (ANU)

Other activities

- 5th Summer Harp Course, Schl of Music, ANU
- Seven Harp Ensemble rehearsals and concert, Schl of Music, ANU
- Field sound recording in rainforest west of KCC, and Nat Park, Megaphon Sound Studios
- ANU Law Revue, practice and revue night, Law, ANU
- ANU / Yale Alumni Exchange; campfire, walking, lectures, tours, bushdance
- SCUNA Revue night and rehearsals. ANU Choral Society
- Recreational activities, various individuals and groups
- Recreational group activity, ANU Medical Student Society